



LIBERTY MANUFACTURING GROUP

2025—1st Edition

Made in the U.S.A.!



**Our business is built on the core pillars of
Quality, Delivery and Price.**

**We strive to provide our customers
with unique and innovative products
at a competitive price,
delivered in a reasonable amount of time,
while maintaining the
highest possible quality.**



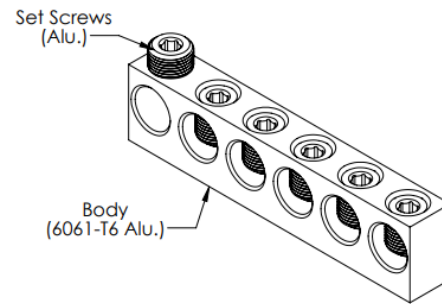
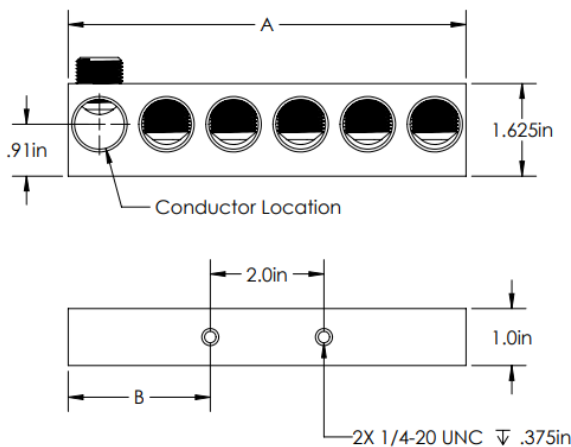
LIBERTY MANUFACTURING GROUP

Made in the USA!



In-Line Pedestal Mount Block Connector

- Manufactured from high strength 6061-T6 Aluminum Alloy
- Provides premium electrical and mechanical performance
- For aluminum and copper conductors
- Range taking to reduce inventory
- Internal Hex, Drive Size 5/16"
- Contains inhibitor



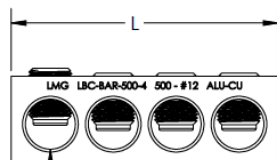
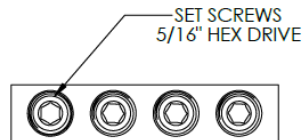
PART #	CONDUCTOR RANGE		Number of Ports	Number of Mounting Holes	DIMENSIONS		CARTON QTY
	MIN	MAX			A	B	
LBC-PED-250-2	#12	250 MCM	2	-	2.4"	-	25
LBC-PED-250-4	#12	250 MCM	4	2	4.6"	1.32"	25
LBC-PED-250-5	#12	250 MCM	5		5.82"	1.91"	25
LBC-PED-250-6	#12	250 MCM	6		7.0"	2.5"	25
LBC-PED-250-8	#12	250 MCM	8		9.36"	3.68"	25
LBC-PED-500-4	#10	500 MCM	4		4.6"	1.32"	25
LBC-PED-500-5	#10	500 MCM	5		5.82"	1.91"	25
LBC-PED-500-6	#10	500 MCM	6		7.0"	2.5"	25
LBC-PED-500-8	#10	500 MCM	8		9.36"	3.68"	25

ADD "T" AT END OF PART NUMBER FOR TIN PLATING

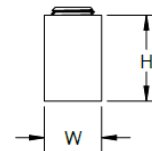


Pedestal Bar Connector

- Manufactured from high strength 6061-T6 Aluminum Alloy
- Provides premium electrical and mechanical performance
- For aluminum and copper conductors
- Internal Hex, Drive Size 5/16"
- Contains inhibitor



(CONDUCTOR PORTS W/
INHIBITOR APPLIED AT FACTORY)



PART #	CONDUCTOR RANGE		Number of Ports	DIMENSIONS		
	MIN	MAX		L	W	H
LBC-BAR-250-2	#12	250 MCM	2	2.95"	1"	1.25"
LBC-BAR-250-4	#12	250 MCM	4	3.85"		
LBC-BAR-250-5	#12	250 MCM	5	4.75"		
LBC-BAR-250-6	#12	250 MCM	6	5.625"		
LBC-BAR-250-8	#12	250 MCM	8	7.425"		
LBC-BAR-350-2	#12	350 MCM	2	2.25"	1"	1.25"
LBC-BAR-350-4	#12	350 MCM	4	4.25"		
LBC-BAR-350-5	#12	350 MCM	5	5.25"		
LBC-BAR-350-6	#12	350 MCM	6	6.25"		
LBC-BAR-350-8	#12	350 MCM	8	8.25"		
LBC-BAR-500-4	#10	500 MCM	4	4.675"	1"	1.5"
LBC-BAR-500-5	#10	500 MCM	5	5.775"		
LBC-BAR-500-6	#10	500 MCM	6	6.875"		
LBC-BAR-500-8	#10	500 MCM	8	9.075"		

Tin Plated—Add suffix "T" at end of part #

Other sizes available upon request!

LIBERTY MANUFACTURING GROUP

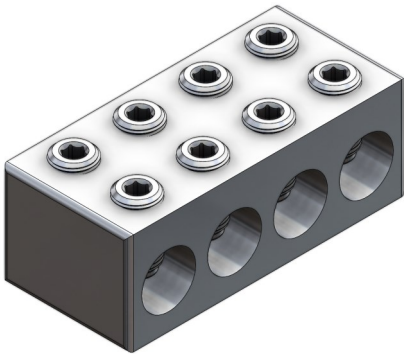
Made in the U.S.A!



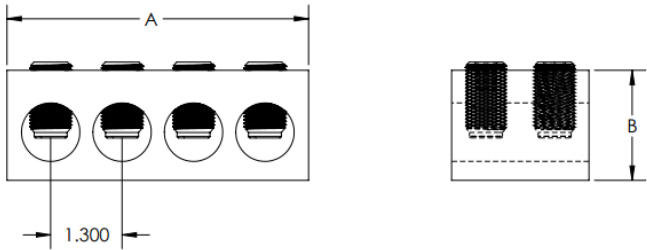
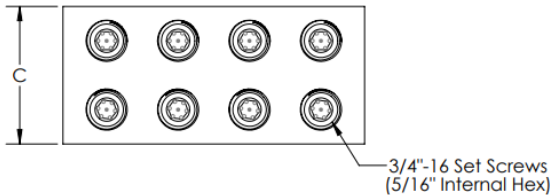
LIBERTY MANUFACTURING GROUP

Made in the U.S.A!

Pedestal Bar Connector (X-Series)



- Manufactured from high strength 6061-T6 Aluminum Alloy
- Provides premium electrical and mechanical performance
- For aluminum and copper conductors
- Double row of set screws per conductor port
- Internal Hex, Drive Size 5/16"
- Contains inhibitor



PART #	CONDUCTOR RANGE		Number of Ports	DIMENSIONS			CARTON QTY
	MIN	MAX		A	B	C	
LBC-BARX-750-4	#10	750 MCM	4	5.49"	2	2.5	20
LBC-BARX-750-6	#10	750 MCM	6	8.11"			15
LBC-BARX-750-8	#10	750 MCM	8	10.73"			15

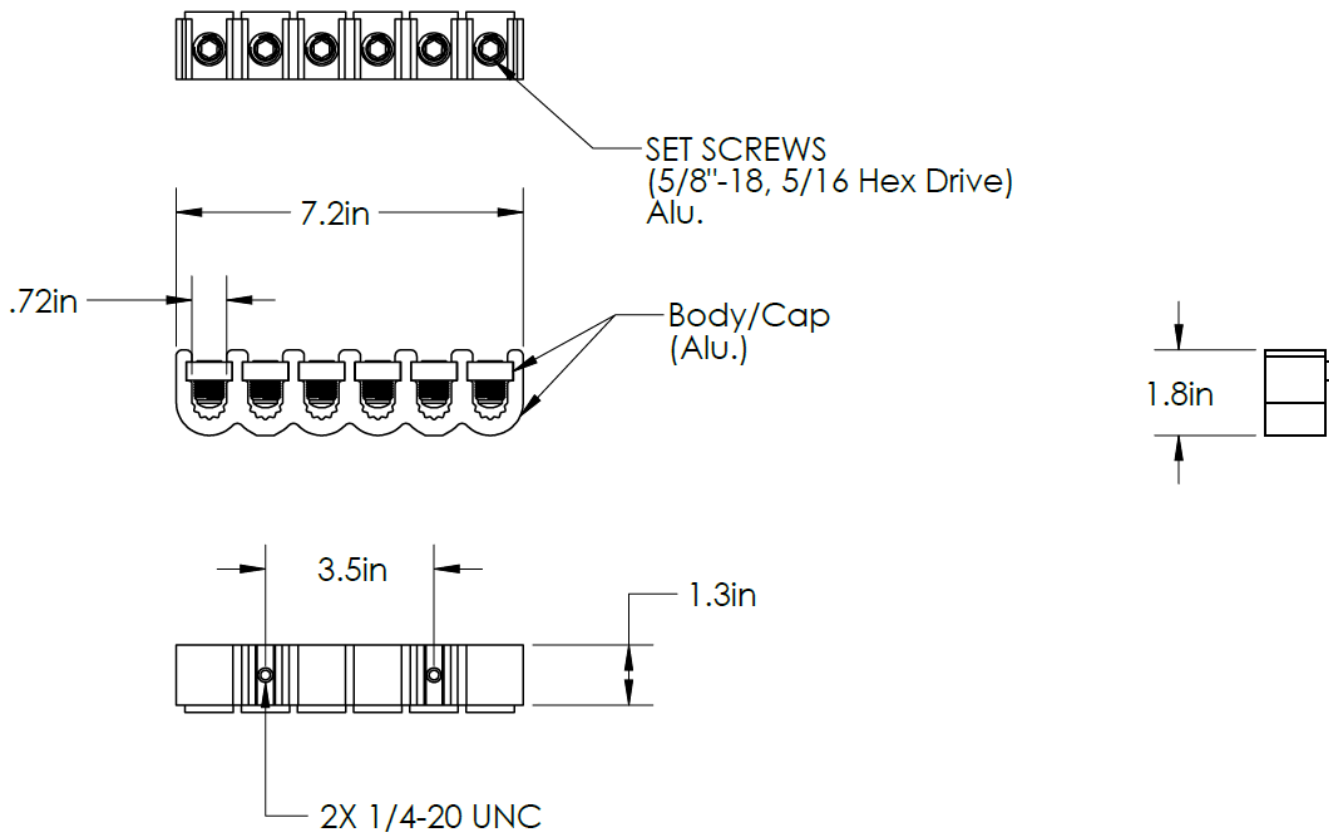
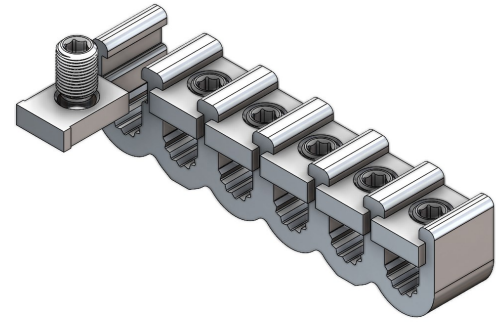
ADD SUFFIX "-COV" FOR CLEAR PLASTIC SLIP-ON COVER

ADDITIONAL SIZES AVAILABLE UPON REQUEST!



Pedestal Bar Connector (Lay-In)

- Manufactured from high strength 6061-T6 Aluminum Alloy
- Provides premium electrical and mechanical performance
- For aluminum and copper conductors
- Lay-In style connector for Pedestal Mounting
- Internal Hex, Drive Size 5/16"
- Contains inhibitor



PART #	CONDUCTOR RANGE		Number of Ports
	MIN	MAX	
LBC-PEDL-350-6	#10	350 MCM	6

Other sizes available upon request!

LIBERTY MANUFACTURING GROUP

Made in the U.S.A!



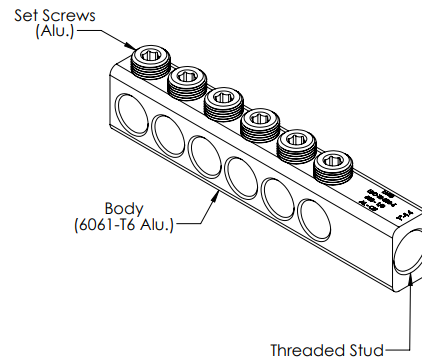
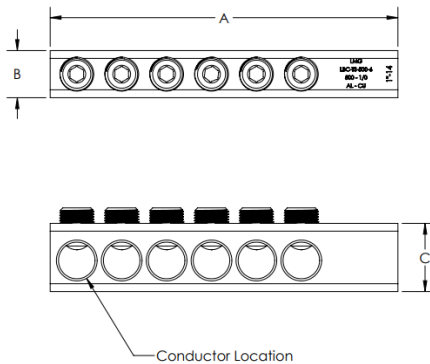
LIBERTY MANUFACTURING GROUP

Made in the U.S.A!



Threaded Stud Block Connector

- Manufactured from high strength 6061-T6 Aluminum Alloy
- Provides premium electrical and mechanical performance
- For aluminum and copper conductors
- Range taking to reduce inventory
- Includes Factory Applied Inhibitor



PART #	CONDUCTOR RANGE		Number of Ports	Stud Size	DIMENSIONS			CARTON QTY
	MIN	MAX			A	B	C	
LBC-TS-350-4	#12	350 MCM	4	5/8" - 11	5.55	1"	1.25"	25
LBC-TS-350-6	#12	350 MCM	6		7.63"			25
LBC-TS-350-8	#12	350 MCM	8		9.68"			25
LBC-TS-500-2	#12	500 MCM	2	1" - 14	4.03"	1.250"	1.750"	50
LBC-TS-500-3	#12	500 MCM	3		5.10"			50
LBC-TS-500-4	#12	500 MCM	4		6.18"			25
LBC-TS-500-5	#12	500 MCM	5		7.25"			25
LBC-TS-500-6	#12	500 MCM	6		8.325"			25
LBC-TS-500-8	#12	500 MCM	8		10.475"			25
LBC-TS-750-4	#12	750 MCM	4	1" - 14	7.64"	1.250"	1.750"	25
LBC-TS-750-4A	#12	750 MCM	4	5/8" - 11	7.64"			25
LBC-TS-750-6	#12	750 MCM	6	1" - 14	10.260"			25
LBC-TS-750-6A	#12	750 MCM	6	5/8" - 11	10.260"			25
LBC-TS-750-8	#12	750 MCM	8	1" - 14	12.89"			20
LBC-TS-750-8A	#12	750 MCM	8	5/8" - 11	12.89"			20

Tin Plated—Add suffix "T"

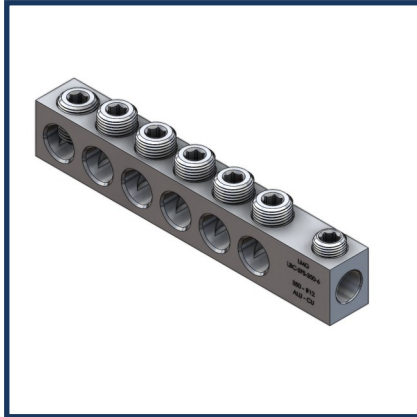
Street Light Outlet (1/0—#14) —Add suffix "SL", adds 7/8" to length

Clear Plastisol Cover - Add suffix "-COV" to end of part number



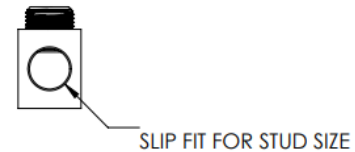
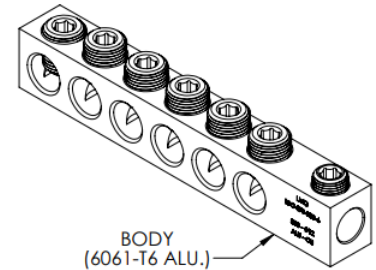
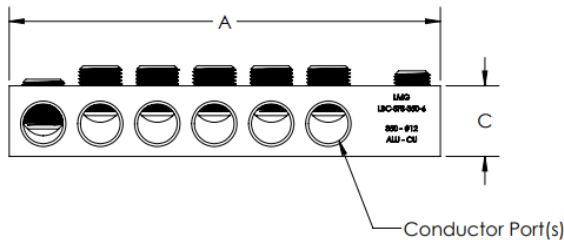
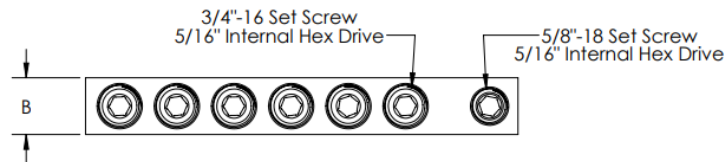
LIBERTY MANUFACTURING GROUP

Made in the U.S.A!



Slip Fit Stud Block Connector

- Manufactured from high strength 6061-T6 Aluminum Alloy
- Provides premium electrical and mechanical performance
- For aluminum and copper conductors
- Range taking to reduce inventory
- Includes Factory Applied Inhibitor



PART #	CONDUCTOR RANGE		Number of Ports	Stud Size	DIMENSIONS			CARTON QTY
	MIN	MAX			A	B	C	
LBC-SFS-350-4	#12	350 MCM	4	5/8"	5.55	1"	1.25"	25
LBC-SFS-350-6	#12	350 MCM	6		7.63"			25
LBC-SFS-350-8	#12	350 MCM	8		9.68"			25
LBC-SFS-500-4	#12	500 MCM	4	1"	6.43"	1.25"	1.75"	25
LBC-SFS-500-6	#12	500 MCM	6		8.58"			25
LBC-SFS-500-8	#12	500 MCM	8		10.93"			25
LBC-SFS-750-4	#12	750 MCM	4	1"	7.64	1.50"	1.75"	25
LBC-SFS-750-6	#12	750 MCM	6		10.26			25
LBC-SFS-750-8	#12	750 MCM	8		12.89			25

Tin Plated—Add suffix "T"

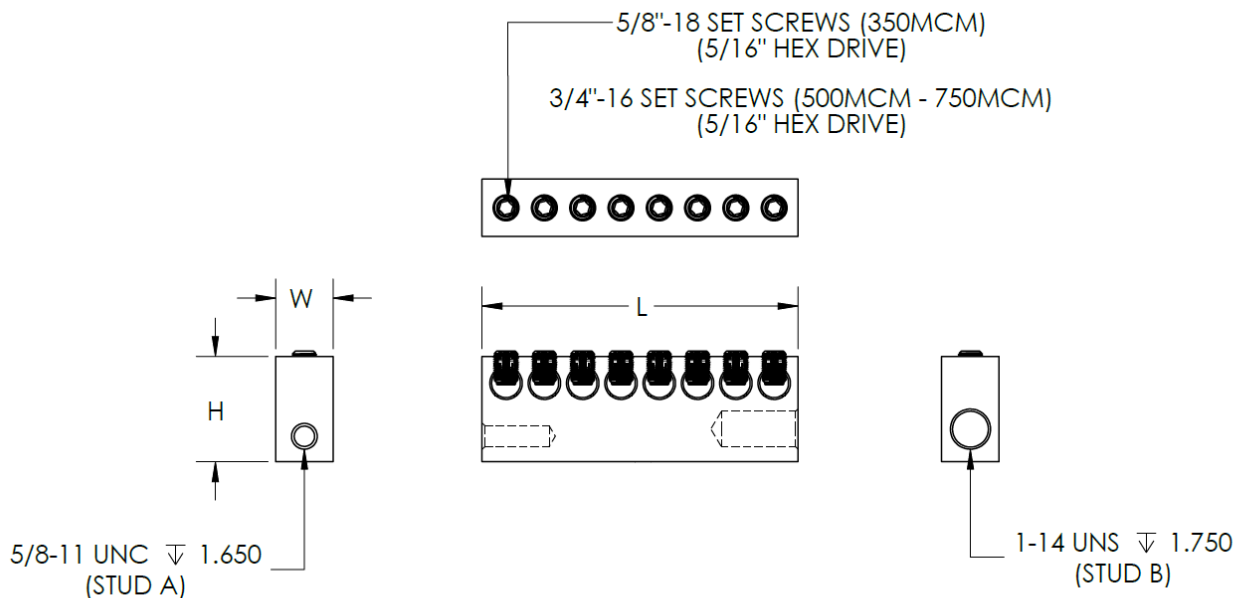
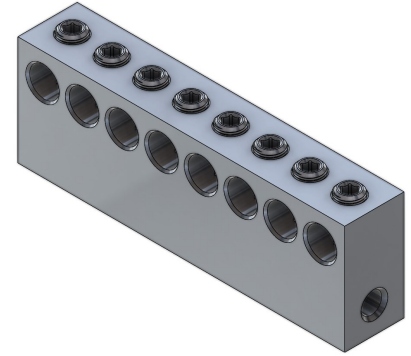
Street Light Outlet (1/0—#14) —Add suffix "SL", adds 7/8" to length

Clear Plastisol Cover - Add suffix "-COV" to end of part number



Space Saver Threaded Stud

- Manufactured from high strength 6061-T6 Aluminum Alloy
- Provides premium electrical and mechanical performance
- For aluminum and copper conductors
- Range taking to reduce inventory
- Includes Factory Applied Inhibitor
- Increased height "H", decreased length "L" compared to standard TS models



PART #	Number of Ports	CONDUCTOR RANGE		STUD THREAD		DIMENSIONS		
		MAX	MIN	A	B	L	W	H
LBC-TS1-350-4	4	350 MCM	#12	5/8" - 11	1"-14	4.25"	1.5"	2.75"
LBC-TS1-350-6	6					6.25"		
LBC-TS1-350-8	8					8.25"		
LBC-TS1-500-4	4	500 MCM	#12	5/8" - 11	1"-14	4.68"		
LBC-TS1-500-6	6					6.88"		
LBC-TS1-500-8	8					9.06"		
LBC-TS1-750-4	4	750 MCM	#12	5/8" - 11	1"-14	5.46"		
LBC-TS1-750-6	6					8.06"		
LBC-TS1-750-8	8					10.66"		

Tin Plated—Add suffix "T"

Add "-COV" at end of part for cover

Additional Sizes Available Upon Request

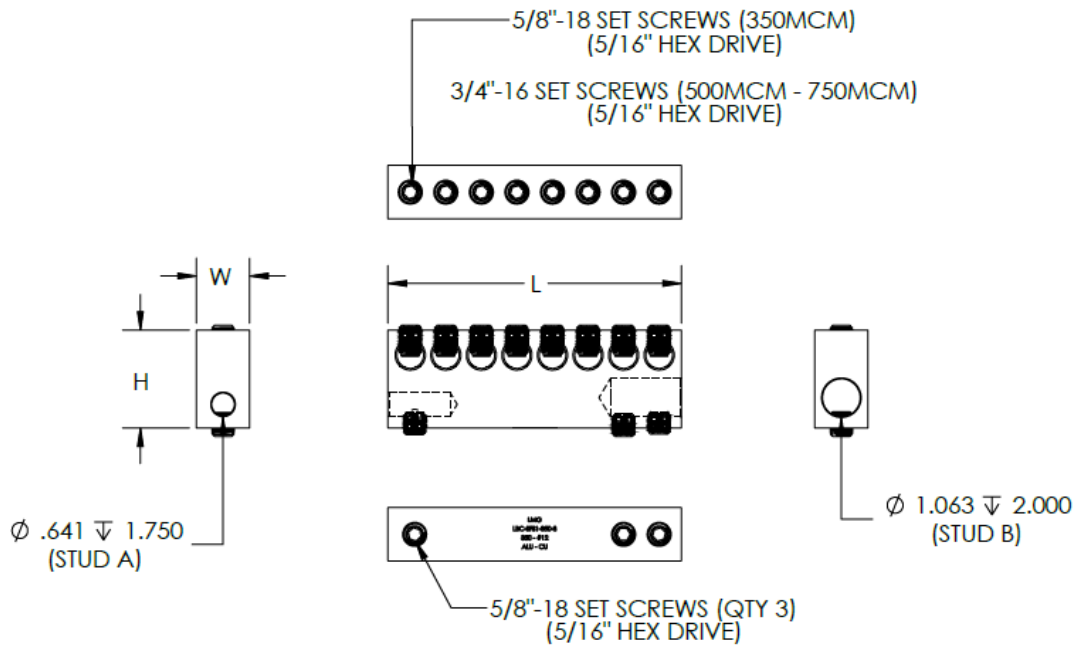
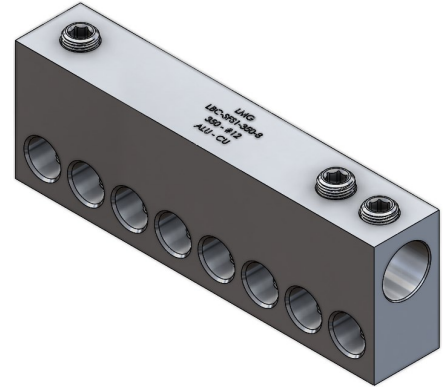
LIBERTY MANUFACTURING GROUP

Made in the U.S.A!



Space Saver Slip-Fit Stud

- Manufactured from high strength 6061-T6 Aluminum Alloy
- Provides premium electrical and mechanical performance
- For aluminum and copper conductors
- Range taking to reduce inventory
- Includes Factory Applied Inhibitor
- Increased height "H", decreased length "L" compared to standard SFS models



PART #	Number of Ports	CONDUCTOR RANGE		STUD DIAMETER		DIMENSIONS		
		MAX	MIN	A	B	L	W	H
LBC-SFS1-350-4	4	350 MCM	#12	5/8"	1"	4.25"	1.5"	2.75"
LBC-SFS1-350-6	6					6.25"		
LBC-SFS1-350-8	8					8.25"		
LBC-SFS1-500-4	4	500 MCM	#12	5/8"	1"	4.68"		
LBC-SFS1-500-6	6					6.88"		
LBC-SFS1-500-8	8					9.06"		
LBC-SFS1-750-4	4	750 MCM	#12	5/8"	1"	5.46"		
LBC-SFS1-750-6	6					8.06"		
LBC-SFS1-750-8	8					10.66"		

Tin Plated—Add suffix "T"

Add "-COV" at end of part for cover

Additional Sizes Available Upon Request

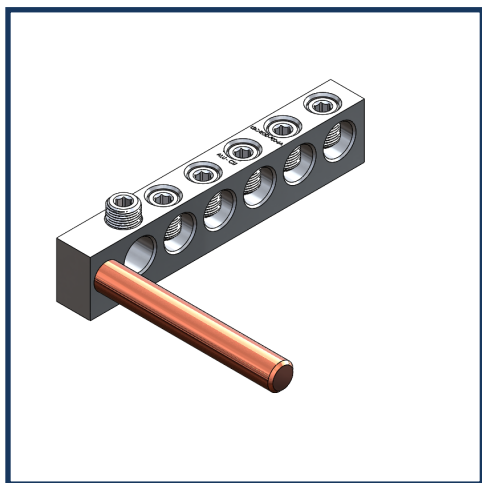
LIBERTY MANUFACTURING GROUP

Made in the U.S.A!



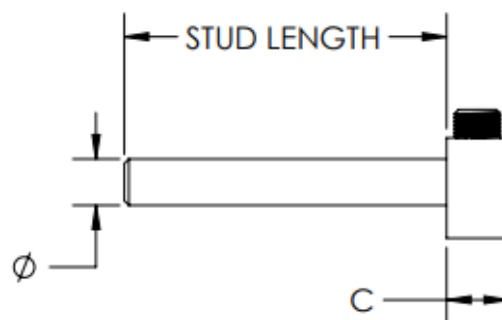
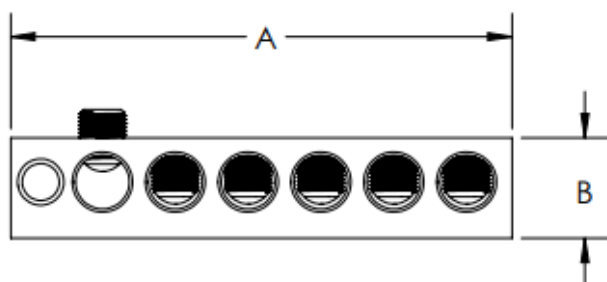
LIBERTY MANUFACTURING GROUP

Made in the U.S.A!



Stud Post Connector—250 Series

- Manufactured from high strength 6061-T6 Aluminum Alloy
- Provides premium electrical and mechanical performance
- For aluminum and copper conductors
- Internal Hex, Drive Size 5/16"
- Contains factory applied inhibitor
- Copper Tin Plated Stud



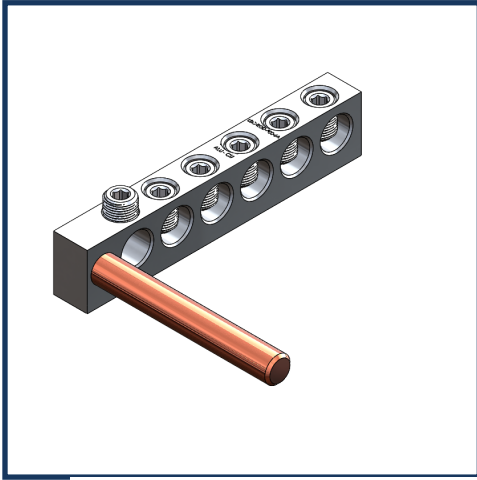
PART #	CONDUCTOR RANGE		Number of Ports	Copper Stud Diameter	Stud Length	DIMENSIONS			CARTON QTY
	MIN	MAX				A	B	C	
LBC-ROD-250-2B	#12	250 MCM	2	.5"	4"	2.6875"	1.250"	1"	20
LBC-ROD-250-2C				.375"	3"				
LBC-ROD-250-3B	#12	250 MCM	3	.5"	4"	3.5"			
LBC-ROD-250-3C				.375"	3"				
LBC-ROD-250-4B	#12	250 MCM	4	.5"	4"	4.3125"			10
LBC-ROD-250-4C				.375"	3"				
LBC-ROD-250-5B	#12	250 MCM	5	.5"	4"	5.125"			
LBC-ROD-250-5C				.375"	3"				
LBC-ROD-250-6B	#12	250 MCM	6	.5"	4"	5.9375"			
LBC-ROD-250-6C				.375"	3"				
LBC-ROD-250-8B	#12	250 MCM	8	.5"	4"	7.5625"			
LBC-ROD-250-8C				.375"	3"				

ADD "T" AT END OF PART NUMBER FOR TIN PLATED
 ADD "Y" AT END OF PART NUMBER FOR ANODIZED
 FOR SIZES NOT LISTED PLEASE CONTACT FACTORY!



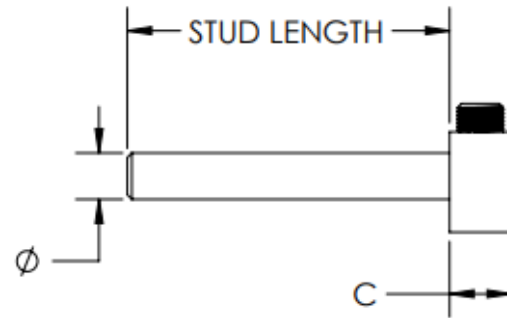
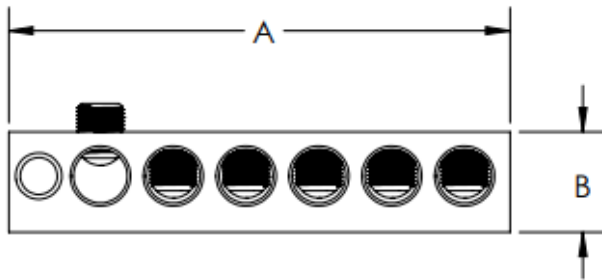
LIBERTY MANUFACTURING GROUP

Made in the USA!



Stud Post Connector—350 Series

- Manufactured from high strength 6061-T6 Aluminum Alloy
- Provides premium electrical and mechanical performance
- For aluminum and copper conductors
- Internal Hex, Drive Size 5/16"
- Contains factory applied inhibitor
- Copper Tin Plated Stud



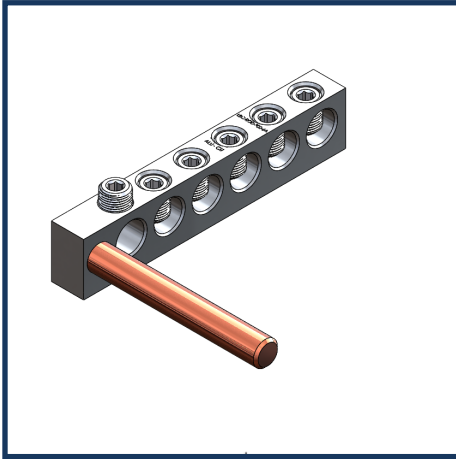
PART #	CONDUCTOR RANGE		Number of Ports	Copper Stud Diameter	Stud Length	DIMENSIONS			CARTON QTY
	MIN	MAX				A	B	C	
LBC-ROD-350-2A	#12	350 MCM	2	.625"	4"	3.250"	1.25"	1"	20
LBC-ROD-350-2B				.5"					
LBC-ROD-350-3A			3	.625"		4.187"			
LBC-ROD-350-3B				.5"					
LBC-ROD-350-4A			4	.625"		5.062"			10
LBC-ROD-350-4B				.5"					
LBC-ROD-350-5A			5	.625"		6"			
LBC-ROD-350-5B				.5"					
LBC-ROD-350-6A			6	.625"		6.875"			
LBC-ROD-350-6B				.5"					
LBC-ROD-350-8A			8	.625"		8.687"			
LBC-ROD-350-8B				.5"					

ADD "T" AT END OF PART NUMBER FOR TIN PLATED
ADD "Y" AT END OF PART NUMBER FOR ANODIZED
FOR SIZES NOT LISTED PLEASE CONTACT FACTORY!



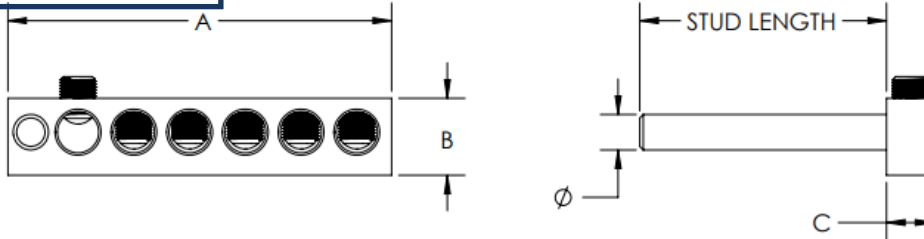
LIBERTY MANUFACTURING GROUP

Made in the U.S.A!



Stud Post Connector—500 Series

- Manufactured from high strength 6061-T6 Aluminum Alloy
- Provides premium electrical and mechanical performance
- For aluminum and copper conductors
- Range taking to reduce inventory
- Internal Hex, Drive Size 5/16"
- Contains inhibitor
- Copper Tin Plated Stud



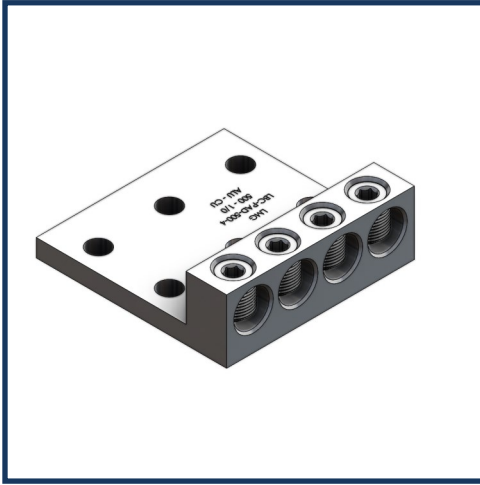
PART #	CONDUCTOR RANGE		Number of Ports	Copper Stud Diameter	Stud Length	DIMENSIONS			CARTON QTY
	MIN	MAX				A	B	C	
LBC-ROD-500-2	#12	500 MCM	2	.75"	4.50"	3.5"	1.750"	1.25"	20
LBC-ROD-500-2A				.625"	4"				
LBC-ROD-500-2B				.5"	3"				
LBC-ROD-500-2C				.375"	3"				
LBC-ROD-500-3	#12	500 MCM	3	.75"	4.50"	4.5"	1.750"	1.25"	20
LBC-ROD-500-3A				.625"	4"				
LBC-ROD-500-3B				.5"	3"				
LBC-ROD-500-3C				.375"	3"				
LBC-ROD-500-4	#12	500 MCM	4	.75"	4.50"	4.5"	1.750"	1.25"	10
LBC-ROD-500-4A				.625"	4"				
LBC-ROD-500-4B				.5"	3"				
LBC-ROD-500-4C				.375"	3"				
LBC-ROD-500-5	#12	500 MCM	5	.75"	4.50"	7"	1.750"	1.25"	10
LBC-ROD-500-5A				.625"	4"				
LBC-ROD-500-5B				.5"	3"				
LBC-ROD-500-5C				.375"	3"				
LBC-ROD-500-6	#12	500 MCM	6	.75"	4.50"	8.125"	1.750"	1.25"	10
LBC-ROD-500-6A				.625"	4"				
LBC-ROD-500-6B				.5"	3"				
LBC-ROD-500-6C				.375"	3"				
LBC-ROD-500-8	#12	500 MCM	8	.75"	4.50"	10.375"	1.750"	1.25"	10
LBC-ROD-500-8A				.625"	4"				
LBC-ROD-500-8B				.5"	3"				
LBC-ROD-500-8C				.375"	3"				

ADD "Y" AT END OF PART NUMBER FOR ANODIZED



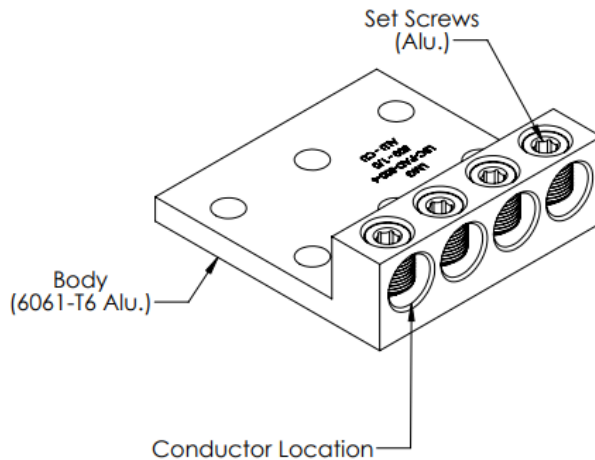
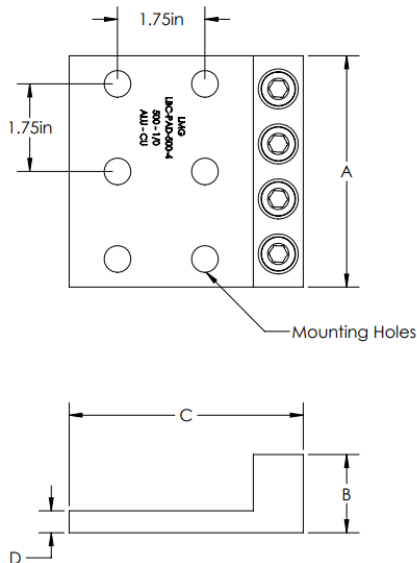
LIBERTY MANUFACTURING GROUP

Made in the U.S.A!



Pad Mount Block Connector

- Manufactured from high strength 6061-T6 Aluminum Alloy
- Provides premium electrical and mechanical performance
- For aluminum and copper conductors
- Range taking to reduce inventory
- Internal Hex, Drive Size 5/16"
- Contains inhibitor
- Mounting Holes for 1/2" bolts, NEMA spaced



PART #	CONDUCTOR RANGE		Number of Ports	Number of Mounting Holes	DIMENSIONS				CARTON QTY
	MIN	MAX			A	B	C	D	
LBC-PAD-500-3	#10	500 MCM	3	4	3.625"	1.5625"	4.6875"	.4375"	10
LBC-PAD-500-4	#10	500 MCM	4	6	4.625"				10
LBC-PAD-500-5	#10	500 MCM	5	8	6.875"				10
LBC-PAD-500-6	#10	500 MCM	6	8	9.125"				10

ADD "T" AT END OF PART NUMBER FOR TIN PLATING

ADD "Y" AT END OF PART NUMBER FOR ANODIZED SET SCREWS

Other Sizes Available upon Request



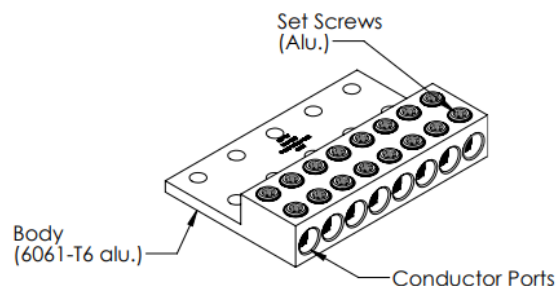
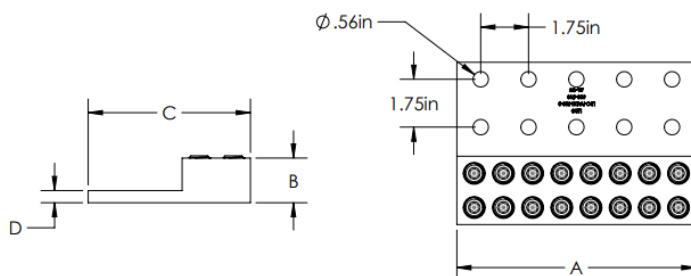
LIBERTY MANUFACTURING GROUP

Made in the U.S.A!



Pad Mount Block Connector (X-Series)

- Manufactured from high strength 6061-T6 Aluminum Alloy
- Provides premium electrical and mechanical performance
- For aluminum and copper conductors
- Double row of set screws per conductor port
- Internal Hex, Drive Size 5/16"
- Contains inhibitor

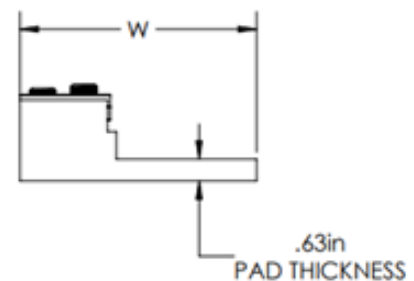
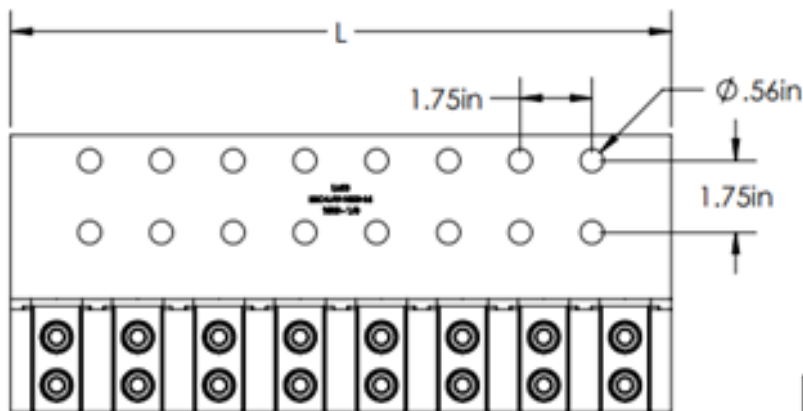
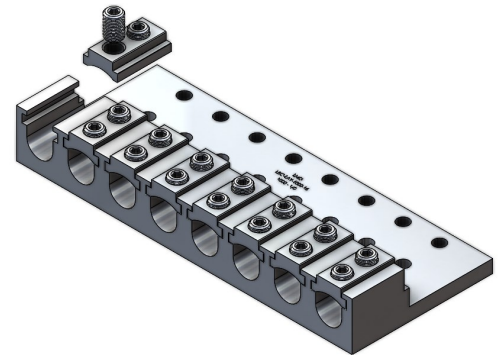


PART #	CONDUCTOR RANGE		Number of Ports	Number of Mounting Holes	DIMENSIONS				CARTON QTY
	MIN	MAX			A	B	C	D	
LBC-PADX-350-1	#12	350 MCM	1	2	1.00"	1.5	5.31	.4375"	10
LBC-PADX-350-2	#12	350 MCM	2	4	2.88"				10
LBC-PADX-350-4	#12	350 MCM	4	6	4.63"				5
LBC-PADX-350-6	#12	350 MCM	6	8	6.38"				5
LBC-PADX-500-1	#10	500 MCM	1	2	1.25"	1.63	5.94"	.4375"	10
LBC-PADX-500-2	#10	500 MCM	2	2	2.34"				10
LBC-PADX-500-2P4M	#10	500 MCM	2	4	2.88"				10
LBC-PADX-500-4	#10	500 MCM	4	4	4.48"				5
LBC-PADX-500-4P6M	#10	500 MCM	4	6	4.63"				5
LBC-PADX-500-6	#10	500 MCM	6	8	6.61"				5
LBC-PADX-500-8	#10	500 MCM	8	10	8.75"				5
LBC-PADX-750-1	#10	750 MCM	1	2	1.5"	1.85"	6.00"	.5"	10
LBC-PADX-750-2	#10	750 MCM	2	4	2.75"				10
LBC-PADX-750-3	#10	750 MCM	3	4	4"				10
LBC-PADX-750-4	#10	750 MCM	4	6	5.25"				5
LBC-PADX-750-5	#10	750 MCM	5	8	6.5"				5
LBC-PADX-750-6	#10	750 MCM	6	8	7.75"				5
LBC-PADX-750-8	#10	750 MCM	8	12	10.76"				5



Lay-In Pad Transformer Lug

- Manufactured from high strength 6061-T6 aluminum alloy
- Used on Copper or Aluminum conductors
- Internal hex, 5/16" drive set screws
- 1/2" bolt mounting holes
- Mounting holes at standard NEMA 1.75" spacing
- Contains inhibitor



PART #	CONDUCTOR RANGE		Number of Ports	Number of Mounting Holes	DIMENSIONS		
	MIN	MAX			L	H	W
LBC-LAY-750-1	#6	750	1	2	1.8"	2.313"	6.75"
LBC-LAY-750-2			2	4	3.41"		
LBC-LAY-750-4			4	8	6.47"		
LBC-LAY-750-6			6	12	9.53"		
LBC-LAY-750-8			8	14	12.59"		
LBC-LAY-1000-2	#6	1000	2	4	4.23"	2.313"	6.75"
LBC-LAY-1000-4			4	8	8.19"		
LBC-LAY-1000-6			6	12	12.15"		
LBC-LAY-1000-8			8	16	16.11"		

Other sizes available upon request!

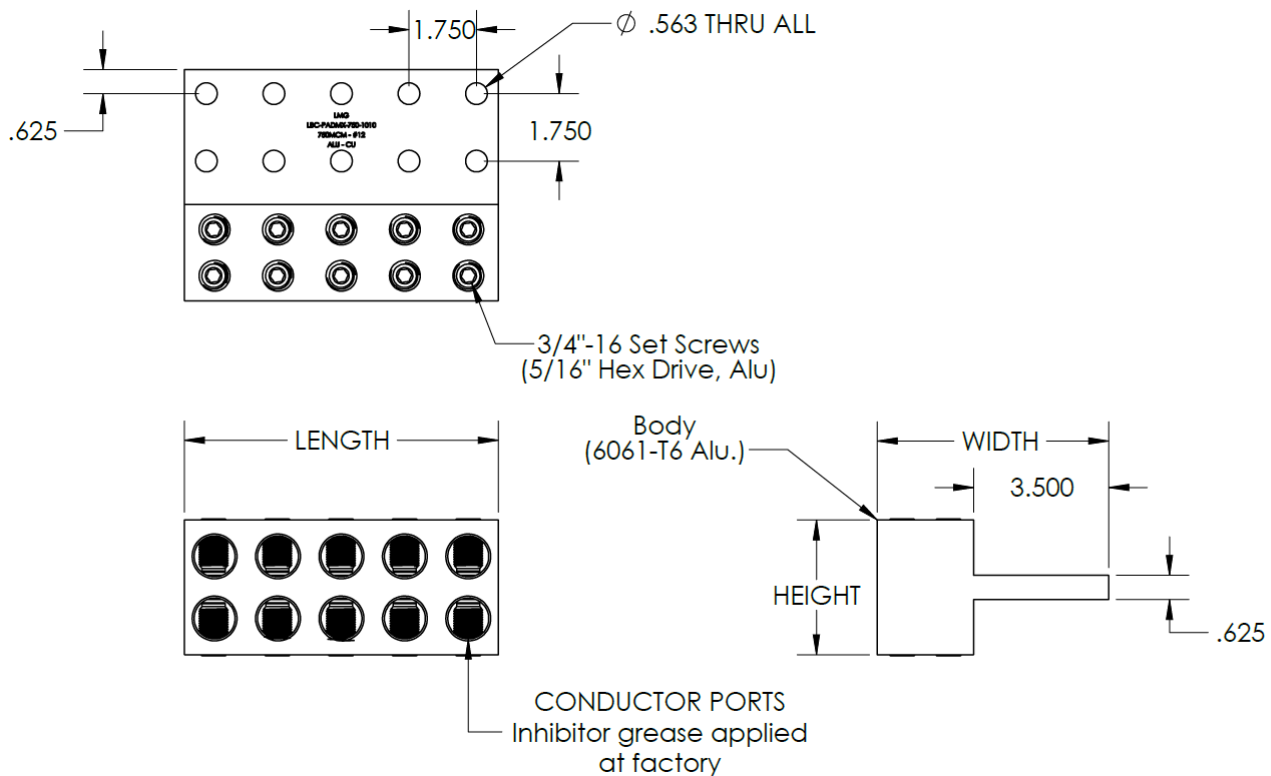
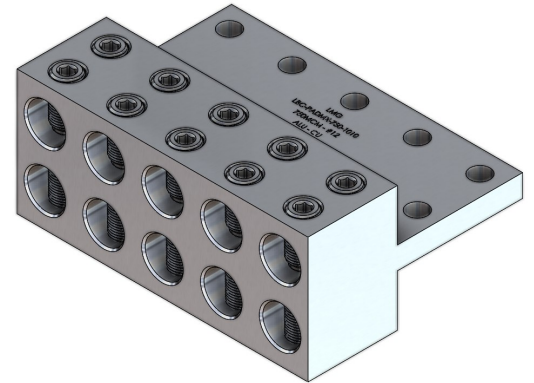
LIBERTY MANUFACTURING GROUP

Made in the U.S.A!



Pad Mount Block Connector (MX-Series)

- Manufactured from high strength 6061-T6 Aluminum Alloy
- Provides premium electrical and mechanical performance
- For aluminum and copper conductors
- Double row of set screws per conductor port
- Internal Hex, Drive Size 5/16"
- Conductor ports contain inhibitor
- Mounting Holes for 1/2" bolts, NEMA spaced

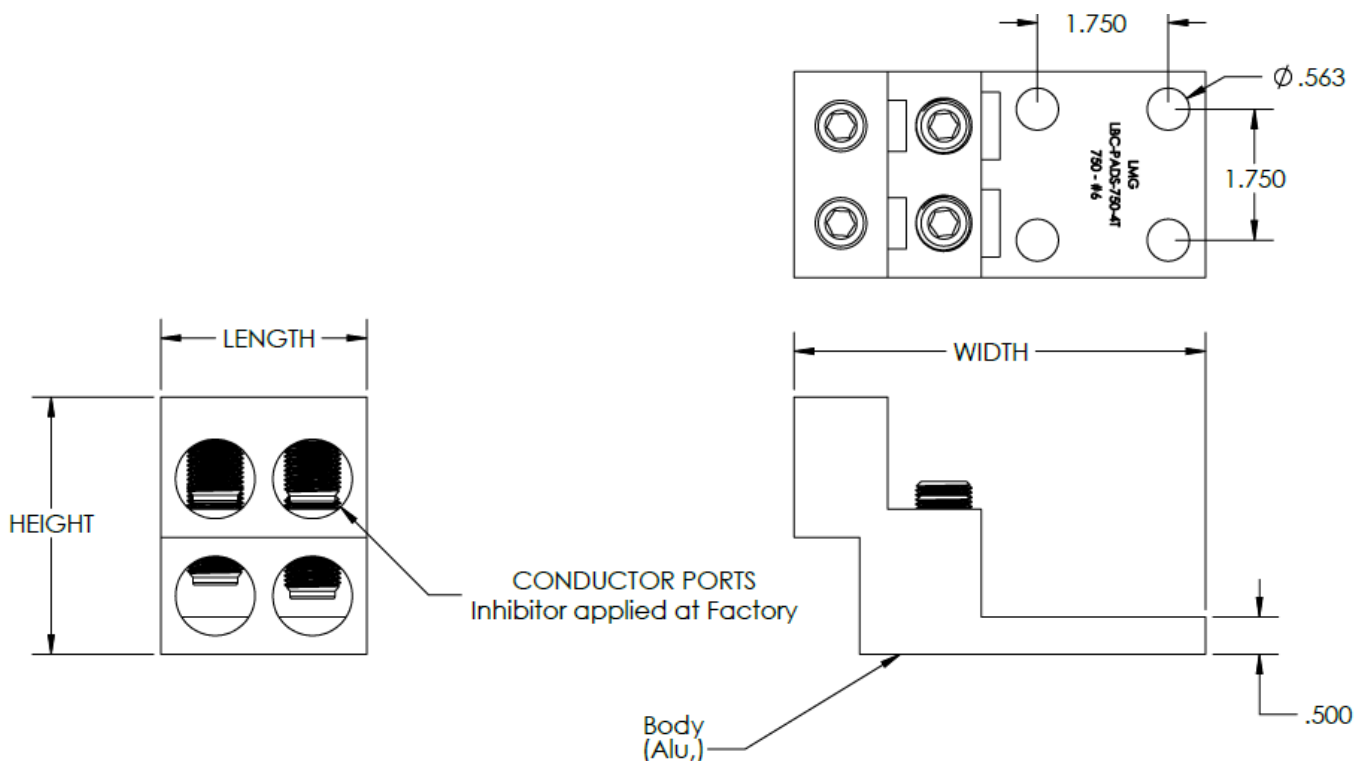
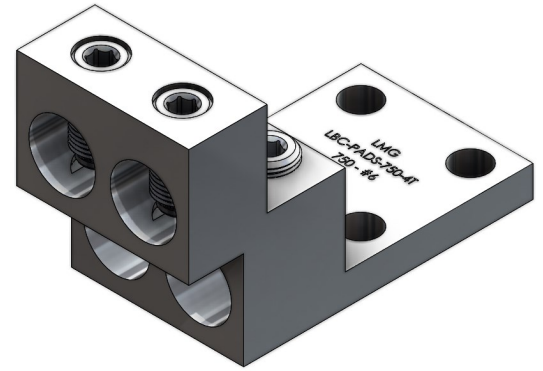


PART #	CONDUCTOR RANGE		Number of Ports	Number of Mounting Holes	DIMENSIONS		
	MIN	MAX			LENGTH	WIDTH	HEIGHT
LBC-PADMX-750-2	#10	750 MCM	2	2	1.562"	6.00"	3.5"
LBC-PADMX-750-4	#10	750 MCM	4	4	3.206"		
LBC-PADMX-750-6	#10	750 MCM	6	4	4.85"		
LBC-PADMX-750-8	#10	750 MCM	8	6	6.49"		
LBC-PADMX-750-10	#10	750 MCM	10	8	8.138"		
LBC-PADMX-750-12	#10	750 MCM	12	10	9.78"		



Pad Mount Stacked Block Connector (PadS-Series)

- Manufactured from high strength 6061-T6 Aluminum Alloy
- Provides premium electrical and mechanical performance
- For aluminum and copper conductors
- Internal Hex, Drive Size 5/16"
- Conductor ports contain inhibitor
- Mounting Holes for 1/2" bolts, NEMA spaced

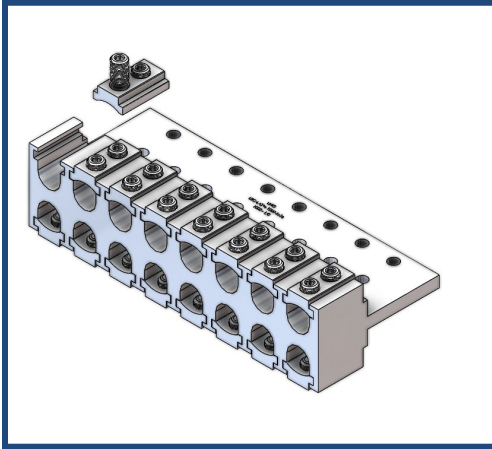


PART #	CONDUCTOR RANGE		Number of Ports	Number of Mounting Holes	DIMENSIONS		
	MIN	MAX			LENGTH	WIDTH	HEIGHT
LBC-PADS-750-2	#10	750 MCM	2	2	1.45"	5.500"	3.437"
LBC-PADS-750-4	#10	750 MCM	4	4	2.750"		
LBC-PADS-750-6	#10	750 MCM	6	4	4.05"		
LBC-PADS-750-8	#10	750 MCM	8	6	5.35"		
LBC-PADS-750-10	#10	750 MCM	10	8	6.65"		
LBC-PADS-750-12	#10	750 MCM	12	10	7.95"		



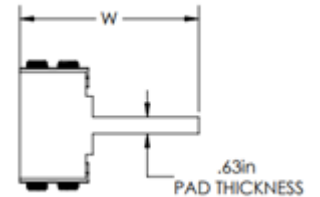
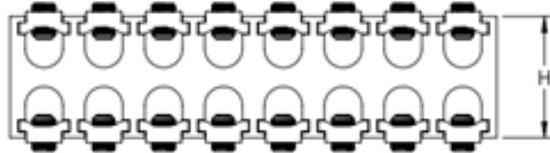
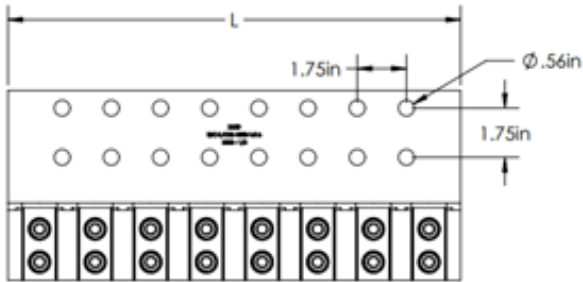
LIBERTY MANUFACTURING GROUP

Made in the U.S.A!



Lay-In Middle Pad Transformer Lug

- Manufactured from high strength 6061-T6 aluminum alloy
- Used on Copper or Aluminum conductors
- Internal hex, 5/16" drive set screws
- 1/2" bolt mounting holes
- Mounting holes at standard NEMA 1.75" spacing
- Range taking to reduce inventory
- Contains inhibitor



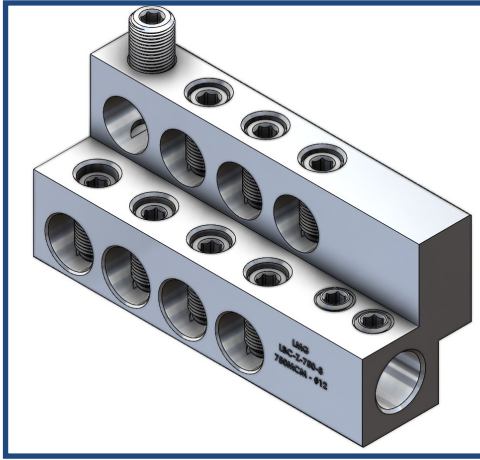
PART #	CONDUCTOR RANGE		Number of Ports	Number of Mounting Holes	DIMENSIONS		
	MIN	MAX			L	H	W
LBC-LAYM-750-22	1/0	750	2	2	1.88"	4.00"	6.75"
LBC-LAYM-750-44			4	4	3.41"		
LBC-LAYM-750-66			6	6	4.94"		
LBC-LAYM-750-88			8	8	6.47"		
LBC-LAYM-750-1010			10	10	8.00"		
LBC-LAYM-750-1212			12	12	9.53"		
LBC-LAYM-750-1616			16	16	11.06"		
LBC-LAYM-1000-22	1/0	1000	2	2	2.25"	4.00"	6.75"
LBC-LAYM-1000-44			4	4	4.23"		
LBC-LAYM-1000-66			6	6	6.21"		
LBC-LAYM-1000-88			8	8	8.19"		
LBC-LAYM-1000-1010			10	10	10.17"		
LBC-LAYM-1000-1212			12	12	12.15"		
LBC-LAYM-1000-1616			16	16	16.11"		

Other sizes available upon request!



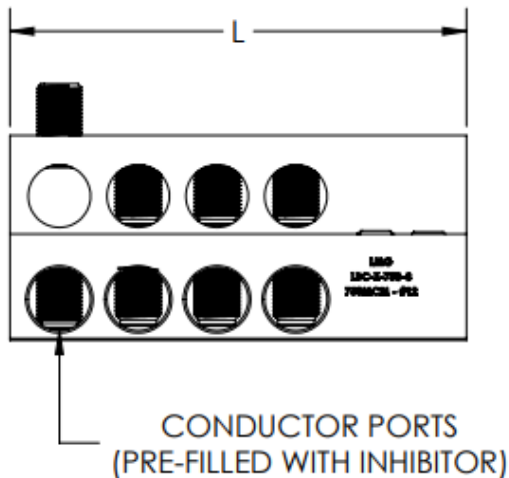
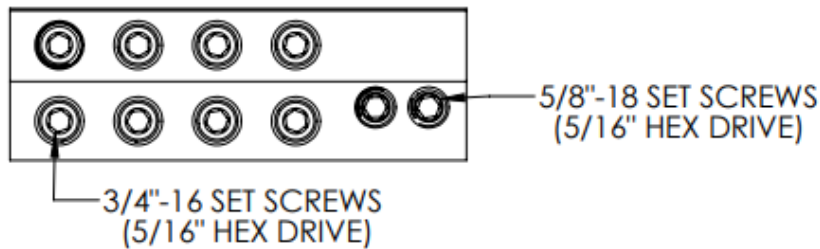
LIBERTY MANUFACTURING GROUP

Made in the U.S.A!

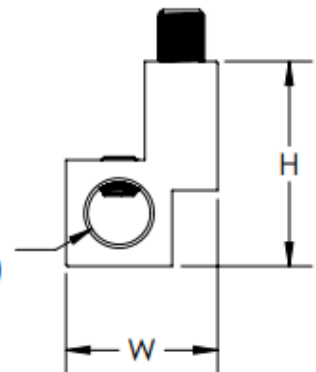


Z Bar Connectors (Slip Fit Mount) - Page 1

- Manufactured from high strength 6061-T6 aluminum alloy
- Used on Copper or Aluminum conductors
- Internal hex, 5/16" drive set screws
- Contains inhibitor
- Designed for Solid Rod Slip Fit Installations



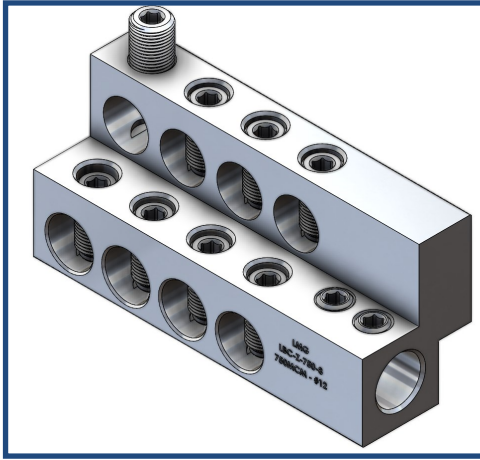
SLIP FIT DIAMETER
(PRE-FILLED WITH INHIBITOR)





LIBERTY MANUFACTURING GROUP

Made in the U.S.A!



Z Bar Connectors (Slip Fit Mount) - Page 2

- Manufactured from high strength 6061-T6 aluminum alloy
- Used on Copper or Aluminum conductors
- Internal hex, 5/16" drive set screws
- Contains inhibitor
- Designed for Solid Rod Slip Fit Installations

PART #	CONDUCTOR RANGE		Number of Ports	SLIP FIT DIAM.	DIMENSIONS			CARTON QTY
	MIN	MAX			L	W	H	
LBC-Z-350-2	#12	350 MCM	2	1"	3.25"	2.5"	3.375"	25
LBC-Z-350-2A				5/8"				
LBC-Z-350-4	#12	350 MCM	4	1"	4.25"			25
LBC-Z-350-4A				5/8"				
LBC-Z-350-6	#12	350 MCM	6	1"	5.25"			25
LBC-Z-350-6A				5/8"				
LBC-Z-350-8	#12	350 MCM	8	1"	6.25"			25
LBC-Z-350-8A				5/8"				
LBC-Z-500-2	#12	500 MCM	2	1"	3.47"	2.5"	3.375"	10
LBC-Z-500-2A				5/8"				
LBC-Z-500-4	#12	500 MCM	4	1"	4.57"			10
LBC-Z-500-4A				5/8"				
LBC-Z-500-6	#12	500 MCM	6	1"	5.67"			10
LBC-Z-500-6A				5/8"				
LBC-Z-500-8	#12	500 MCM	8	1"	6.78"			10
LBC-Z-500-8A				5/8"				
LBC-Z-750-2	#12	750 MCM	2	1"	3.63"	2.5"	3.375"	10
LBC-Z-750-2A				5/8"				
LBC-Z-750-4	#12	750 MCM	4	1"	4.93"			10
LBC-Z-750-4A				5/8"				
LBC-Z-750-6	#12	750 MCM	6	1"	6.23"			10
LBC-Z-750-6A				5/8"				
LBC-Z-750-8	#12	750 MCM	8	1"	7.53"			10
LBC-Z-750-8A				5/8"				

Add Suffix "SL" for optional Street Light Port

Add "R" for Right Hand Configuration

Add "Y" for anodized screws

Add Suffix "-COV" for clear plastisol slip-on cover



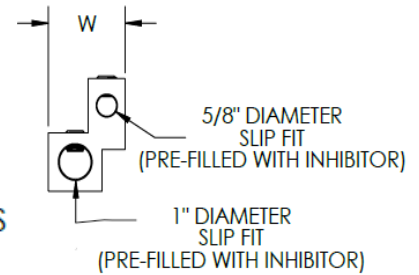
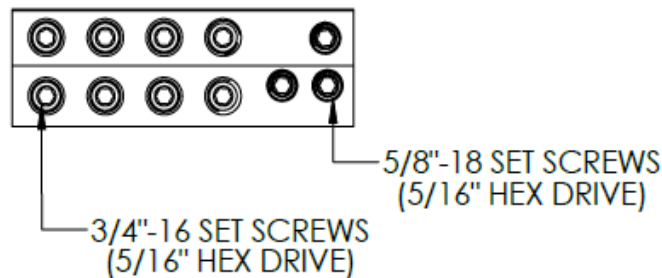
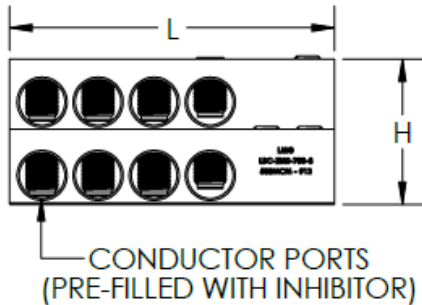
LIBERTY MANUFACTURING GROUP

Made in the U.S.A!



Z Bar Multi Stud Connectors (Slip Fit)

- Manufactured from high strength 6061-T6 aluminum alloy
- Used on Copper or Aluminum conductors
- Internal hex, 5/16" drive set screws
- Contains inhibitor
- Designed for Solid Rod Slip Fit Installations



PART #	CONDUCTOR RANGE		Number of Ports	SLIP FIT DIAM.	DIMENSIONS			CARTON QTY
	MIN	MAX			L	W	H	
LBC-ZMS-350-2	#12	350 MCM	2	5/8" & 1"	3.25"	2.5"	3.375"	25
LBC-ZMS-350-4	#12	350 MCM	4	5/8" & 1"	4.25"			25
LBC-ZMS-350-6	#12	350 MCM	6	5/8" & 1"	5.25"			25
LBC-ZMS-350-8	#12	350 MCM	8	5/8" & 1"	6.25"			25
LBC-ZMS-500-2	#12	500 MCM	2	5/8" & 1"	3.47"	2.5"	3.375"	10
LBC-ZMS-500-4	#12	500 MCM	4	5/8" & 1"	4.57"			10
LBC-ZMS-500-6	#12	500 MCM	6	5/8" & 1"	5.67"			10
LBC-ZMS-500-8	#12	500 MCM	8	5/8" & 1"	6.78"			10
LBC-ZMS-750-2	#12	750 MCM	2	5/8" & 1"	3.63"	2.5"	3.375"	10
LBC-ZMS-750-4	#12	750 MCM	4	5/8" & 1"	4.93"			10
LBC-ZMS-750-6	#12	750 MCM	6	5/8" & 1"	6.23"			10
LBC-ZMS-750-8	#12	750 MCM	8	5/8" & 1"	7.53"			10

Add Suffix "SL" for single Street Light Port or "SL2" for double Street Light Ports. Each "SL" option adds 7/8" to dim L

Add "R" for Right Hand Configuration

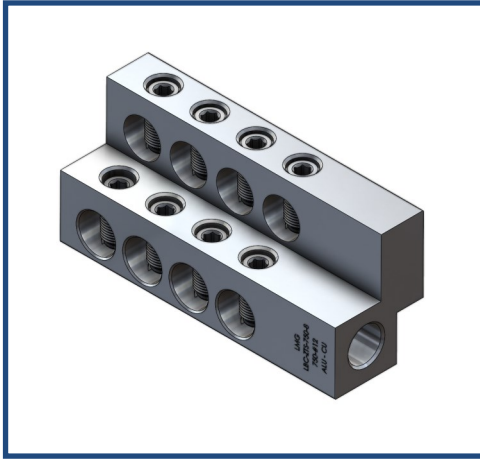
Add "Y" for anodized screws

Add Suffix "-COV" for Clear Plastisol Cover



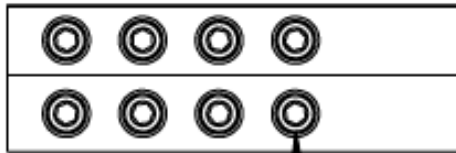
LIBERTY MANUFACTURING GROUP

Made in the U.S.A!

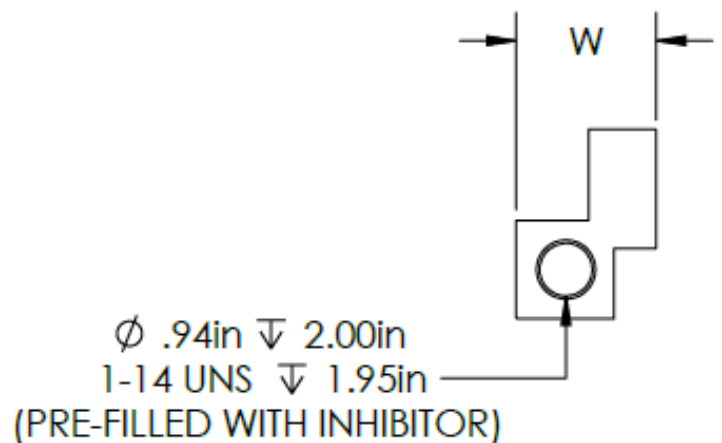
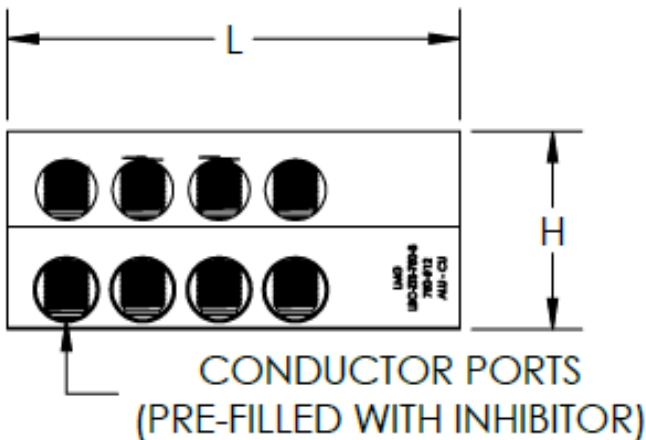


Z-Bar Threaded Stud Connectors—Page 1

- Manufactured from high strength 6061-T6 aluminum alloy
- Used on Copper or Aluminum conductors
- Internal hex, 5/16" drive set screws
- Contains inhibitor
- Designed for 5/8"-11 OR 1"-14 Threaded Studs Installation



3/4"-16 SET SCREWS
(5/16" HEX DRIVE)





LIBERTY MANUFACTURING GROUP

Made in the U.S.A!



Z-Bar Threaded Stud Connectors—Page 2

- Manufactured from high strength 6061-T6 aluminum alloy
- Used on Copper or Aluminum conductors
- Internal hex, 5/16" drive set screws
- Contains inhibitor
- Designed for 5/8"-11 OR 1"-14 Threaded Studs Installation

PART #	CONDUCTOR RANGE		NO. PORTS	THREADED STUD	DIMENSIONS			CARTON QTY
	MIN	MAX			L	W	H	
LBC-ZTS-350-2	#12	350 MCM	2	1"-14	3.25"	2.5"	3.375"	25
LBC-ZTS-350-2A				5/8"-11				
LBC-ZTS-350-4	#12	350 MCM	4	1"-14	4.25"			25
LBC-ZTS-350-4A				5/8"-11				
LBC-ZTS-350-6	#12	350 MCM	6	1"-14	5.25"			25
LBC-ZTS-350-6A				5/8"-11				
LBC-ZTS-350-8	#12	350 MCM	8	1"-14	6.25"			25
LBC-ZTS-350-8A				5/8"-11				
LBC-ZTS-500-2	#12	500 MCM	2	1"-14	3.47"	2.5"	3.375"	10
LBC-ZTS-500-2A				5/8"-11				
LBC-ZTS-500-4	#12	500 MCM	4	1"-14	4.57"			10
LBC-ZTS-500-4A				5/8"-11				
LBC-ZTS-500-6	#12	500 MCM	6	1"-14	5.67"			10
LBC-ZTS-500-6A				5/8"-11				
LBC-ZTS-500-8	#12	500 MCM	8	1"-14	6.78"			10
LBC-ZTS-500-8A				5/8"-11				
LBC-ZTS-750-2	#12	750 MCM	2	1"-14	3.63"	2.5"	3.375"	10
LBC-ZTS-750-2A				5/8"-11				
LBC-ZTS-750-4	#12	750 MCM	4	1"-14	4.93"			10
LBC-ZTS-750-4A				5/8"-11				
LBC-ZTS-750-6	#12	750 MCM	6	1"-14	6.23"			10
LBC-ZTS-750-6A				5/8"-11				
LBC-ZTS-750-8	#12	750 MCM	8	1"-14	7.53"			10
LBC-ZTS-750-8A				5/8"-11				

Add Suffix "SL" for single Street Light Port or "SL2" for double Street Light Ports.

Add "Y" to part number for anodized screws

Other sizes & Threading Diameters available upon request!



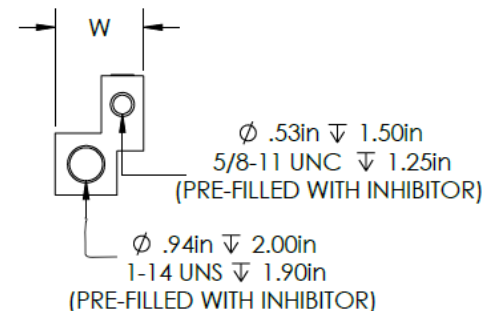
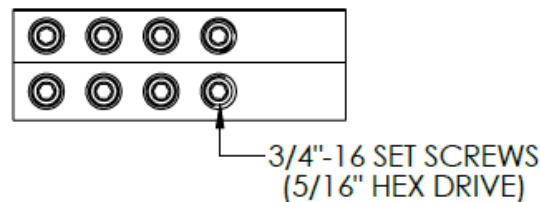
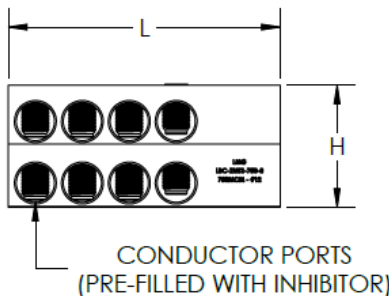
LIBERTY MANUFACTURING GROUP

Made in the U.S.A!



Z-Bar Threaded Multi Stud Connectors

- Manufactured from high strength 6061-T6 aluminum alloy
- Used on Copper or Aluminum conductors
- Internal hex, 5/16" drive set screws
- Contains factory applied inhibitor
- Designed for 5/8"-11 or 1"-14 Threaded Stud Installation



PART #	CONDUCTOR RANGE		NO. PORTS	THREADED STUD	DIMENSIONS			CARTON QTY
	MIN	MAX			L	W	H	
LBC-ZMTS-350-2	#12	350 MCM	2	5/8"-11 & 1"-14	3.25"	2.5"	3.375"	25
LBC-ZMTS-350-4	#12	350 MCM	4	5/8"-11 & 1"-14	4.25"			25
LBC-ZMTS-350-6	#12	350 MCM	6	5/8"-11 & 1"-14	5.25"			25
LBC-ZMTS-350-8	#12	350 MCM	8	5/8"-11 & 1"-14	6.25"			25
LBC-ZMTS-500-2	#12	500 MCM	2	5/8"-11 & 1"-14	3.47"	2.5"	3.375"	25
LBC-ZMTS-500-4	#12	500 MCM	4	5/8"-11 & 1"-14	4.57"			25
LBC-ZMTS-500-6	#12	500 MCM	6	5/8"-11 & 1"-14	5.67"			25
LBC-ZMTS-500-8	#12	500 MCM	8	5/8"-11 & 1"-14	6.78"			25
LBC-ZMTS-750-2	#12	750 MCM	2	5/8"-11 & 1"-14	3.63"	2.5"	3.375"	25
LBC-ZMTS-750-4	#12	750 MCM	4	5/8"-11 & 1"-14	4.93"			25
LBC-ZMTS-750-6	#12	750 MCM	6	5/8"-11 & 1"-14	6.23"			25
LBC-ZMTS-750-8	#12	750 MCM	8	5/8"-11 & 1"-14	7.53"			25

Add Suffix "SL" for single Street Light Port or "SL2" for double Street Light Ports. Each "SL" option adds 7/8" to dim L

Add "R" for Right Hand Configuration

Add suffix "-COV" for clear plastisol slip on cover

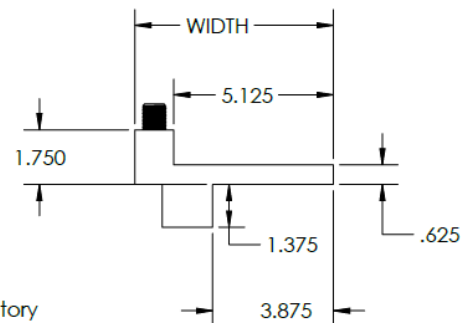
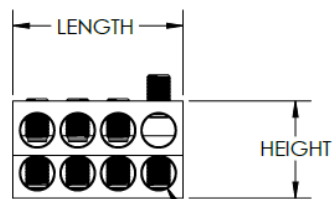
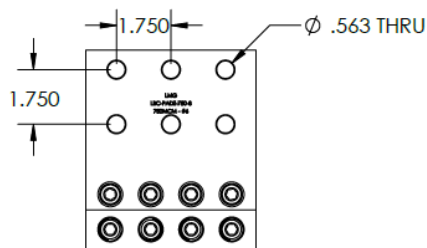
Add "Y" for anodized screws

Add "T" for tin plated body and screws



Pad Mount Z Block Connector (PadZ-Series)

- Manufactured from high strength 6061-T6 Aluminum Alloy
- Provides premium electrical and mechanical performance
- For aluminum and copper conductors
- Internal Hex, Drive Size 5/16"
- Conductor ports contain inhibitor
- Mounting Holes for 1/2" bolts, NEMA spaced

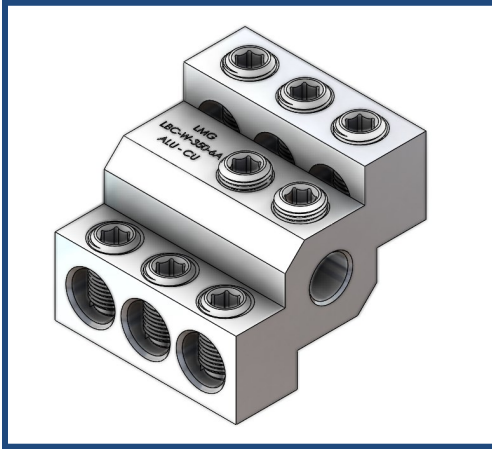


PART #	CONDUCTOR RANGE		Number of Ports	Number of Mounting Holes	DIMENSIONS		
	MIN	MAX			LENGTH	WIDTH	HEIGHT
LBC-PADZ-750-2	#10	750 MCM	2	2	1.562"	6.375"	3.125"
LBC-PADZ-750-4	#10	750 MCM	4	4	3.206"		
LBC-PADZ-750-6	#10	750 MCM	6	4	4.85"		
LBC-PADZ-750-8	#10	750 MCM	8	6	6.49"		
LBC-PADZ-750-10	#10	750 MCM	10	8	8.138"		
LBC-PADZ-750-12	#10	750 MCM	12	10	9.78"		



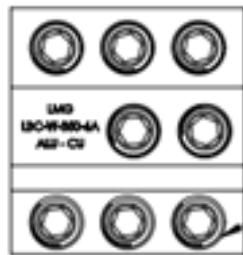
LIBERTY MANUFACTURING GROUP

Made in the U.S.A!

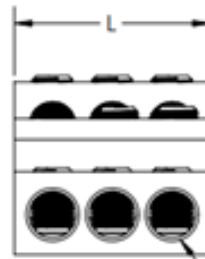


W Bar Transformer Stud Connector

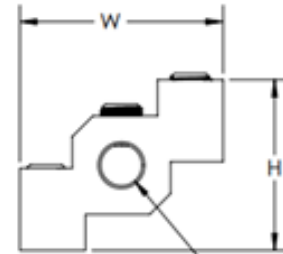
- Manufactured from high strength 6061-T6 aluminum alloy
- Used on Copper or Aluminum conductors
- Internal hex, 5/16" drive set screws
- Stud-Mount Transformer Connector, Quick Disconnect
- Contains inhibitor



SET SCREWS



PORTS



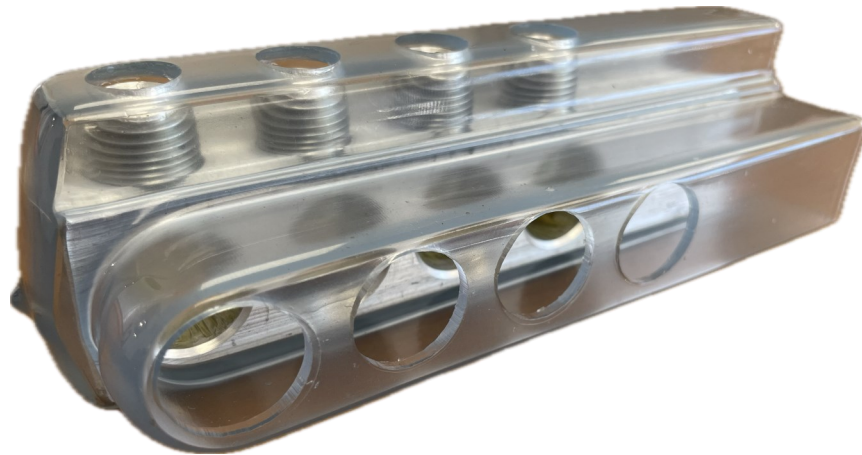
STUD $\varnothing \nabla 2.000$

PART #	CONDUCTOR RANGE		STUD HOLE DIAMETER	Number of Ports	DIMENSIONS		
	MIN	MAX			L	H	W
LBC-W-350-6	#12	350	3/4" (.75")	6	2.95"	2.6"	3.1"
LBC-W-350-8				8	3.85"		
LBC-W-350-10				10	4.75"		
LBC-W-350-12				12	5.65"		
LBC-W-350-6A	#12	350	5/8" (.625")	6	2.95"	2.6"	3.1"
LBC-W-350-8A				8	3.85"		
LBC-W-350-10A				10	4.75"		
LBC-W-350-12A				12	5.65"		
LBC-W-350-6B	#12	350	1/2" (.5")	6	2.95"	2.6"	3.1"
LBC-W-350-8B				8	3.85"		
LBC-W-350-10B				10	4.75"		
LBC-W-350-12B				12	5.65"		
LBC-W-350-6C	#12	350	3/8" (.375")	6	2.95"	2.6"	3.1"
LBC-W-350-8C				8	3.85"		
LBC-W-350-10C				10	4.75"		
LBC-W-350-12C				12	5.65"		

Other sizes available upon request!



SLIP-ON COVERS



TECHNICAL DATA SHEET		
PH789-000		
PVC Plastisol Clear Tint E		
Liquid Charateristics	METHOD	Typical Results
WT/ GALLON (lbs/ gal)	Gardner Cup	9.95
VISCOSITY @ 78F +/- 2F	Brookfield	
20 RPM	#4 spindle	1000 -3000 cps
GEL Temp	INTERNAL	150°F
Fused Physical Properties		
DUROMETER SHORE A	ASTM D2240	77
COLOR	INTERNAL	Clear Blue
Tensile Strenght	INTERNAL	> 2,000 PSI
Tear Strenght	INTERNAL	>270 PLI
Elongation	INTERNAL	> 350%
Flammabilty	FMVSS 302	PASS
Dielectric Properties		
Fused Film Approx 68 mils	ASTM D149-20	367 V/mil

Covers available for ALL Slip-Fit, Threaded and Z-Bar style connectors!

Add “-COV” to end of part

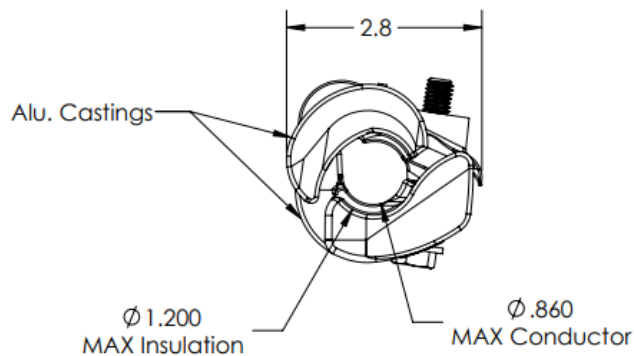
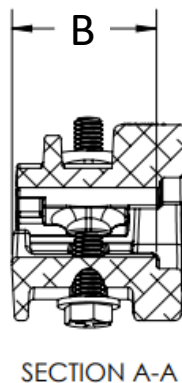
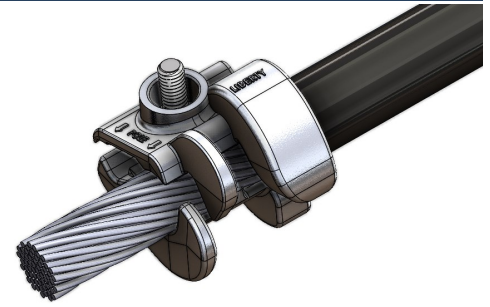
LIBERTY MANUFACTURING GROUP

Made in the U.S.A!



Arc Protection Device

- Used to prevent lightning induced burndowns of covered overhead aluminum primary conductors, also known as L-Nodes or Lightning Anodes.
- Protects covered conductor by shielding it from the usual concentration of arc energy generated during a lightning strike by adding mass of the correct shape to the conductor in the area where it absorbs the terminus of arc energy, thus making it a partially sacrificed component during each strike.
- Install on all three conductor phases and position outside the end of a tie wire.
- Made from high strength aluminum alloy with stainless steel hardware
- Third Party Lab Tested to meet or exceed utility requirements
- Includes factory applied grit inhibitor



PART #	DIMENSIONS			CARTON QTY
	Conductor Range	B	Maximum O.D. of Cable Jacket	
APD80-SS	2/0—556.5 Str. AAC 1/0—477(18/1) ACSR 0.39" - 0.86"	1.90"	1.200"	25

Other sizes available upon request!

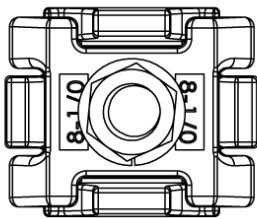
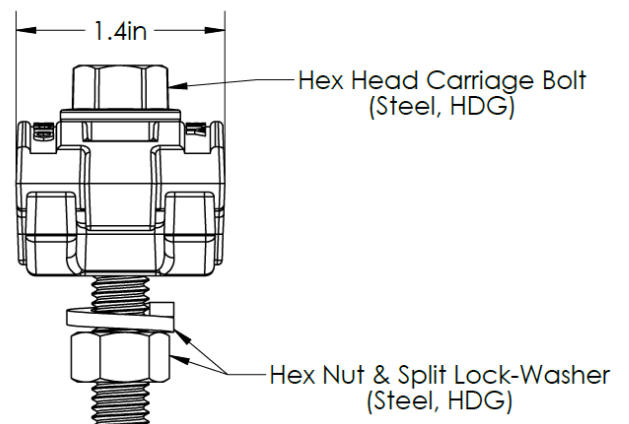
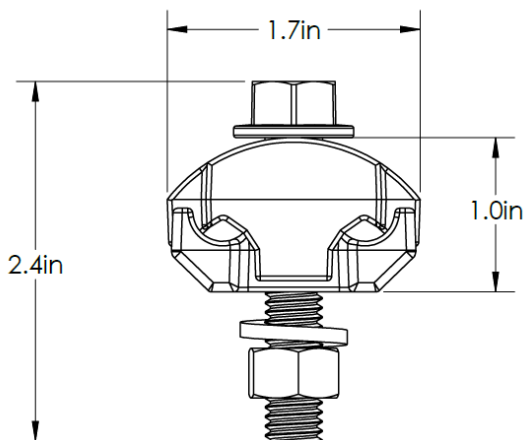
LIBERTY MANUFACTURING GROUP

Made in the U.S.A!



PGX (Parallel Groove) Series

- Multiple purpose parallel groove clamp made of high strength, high conductivity aluminum alloy, Hardware allows for one of two wrench installation, torque: 150 [in-lbs]
- Interlocking fingers on connector body halves present mismatching
- Square shank, hex head, steel bolt allows 1 or 2-wrench installation



PART #	MAIN & TAP	
	MAIN	TAP
PGX-810	#8 - 1/0	.128" - .398"

OTHER SIZES AVAILABLE UPON REQUEST!

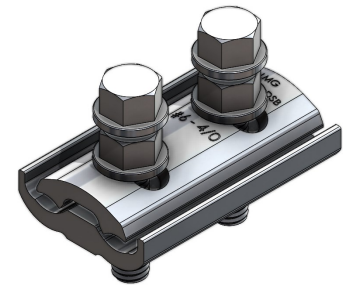
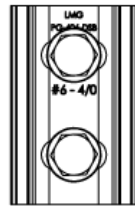


PG (Parallel Groove) Series

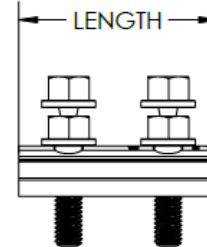
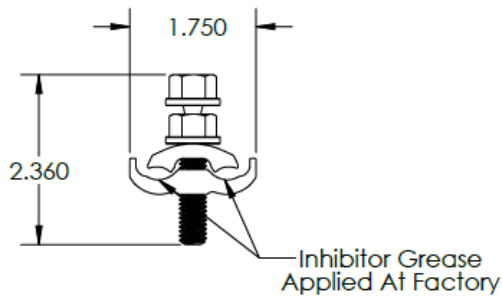
- Parallel groove clamp, offered in single bolt or double bolt styles
- Bolts are made of high-strength aluminum alloy and maintain high contact pressure during heating and cooling cycles.
- Extruded clamps can be applied “hot” without taking them apart. No losing nuts or washers (loose parts).



SHEAR BOLT (SB)



DOUBLE SHEAR BOLT (DSB)



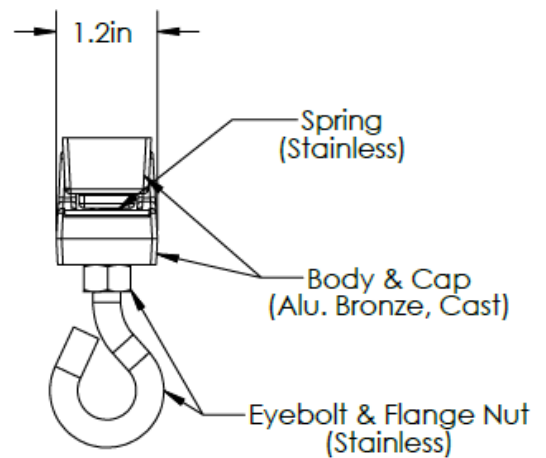
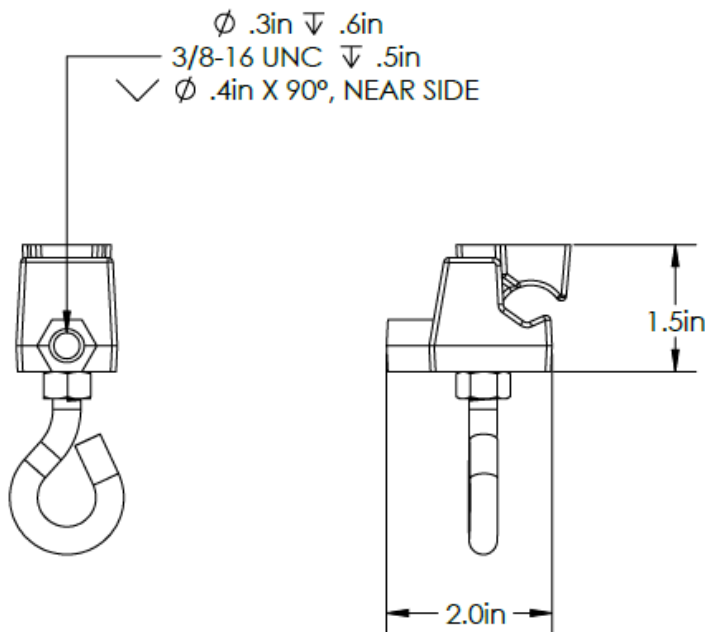
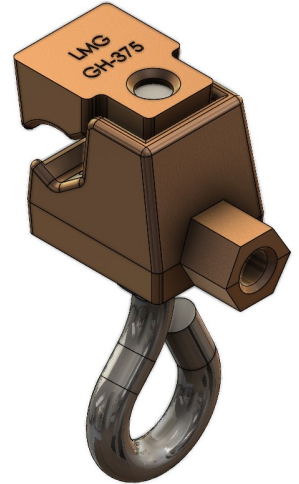
PART #	MAIN & TAP		LENGTH
PG-406	#6 - 4/0	.162" - .563"	1.375"
PG-406-SB	#6 - 4/0	.162" - .563"	1.375"
PG-406-DSB	#6 - 4/0	.162" - .563"	2.75"

OTHER SIZES AVAILABLE UPON REQUEST!



Arrestor Connectors—Bronze

- Bronze Arrestor Connectors
- 3/8"-16 Arrestor Threading
- Aluminum Bronze Castings with 18-8 Stainless Steel Hardware
- Eyebolt for hotstick installation



PART #	CONDUCTOR RANGE		ARRESTOR THREADING
	Min	Max	
GH-375	#6 Cu Sol. (.162")	1/0 Cu Str. (.373")	3/8"-16
GH-376	2/0 Cu (.419")	350 MCM (.681")	3/8"-16

Other sizes available upon request!

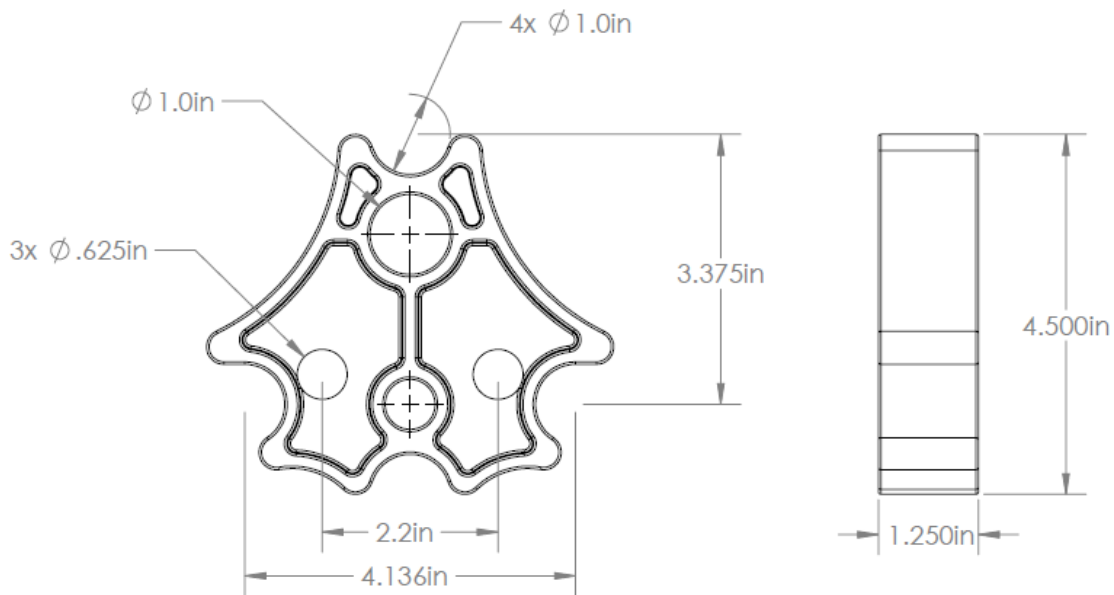
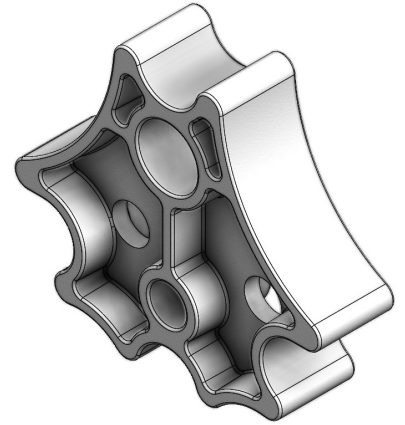
LIBERTY MANUFACTURING GROUP

Made in the U.S.A!



Cable Separators—Triplex or Quadplex

- Triplex or Quadplex Cable Separator
- Glass Filled Nylon Injection Molding
- UV stabilizers
- Color Black



Part Number: QTCS-4X1

Other sizes available upon request!

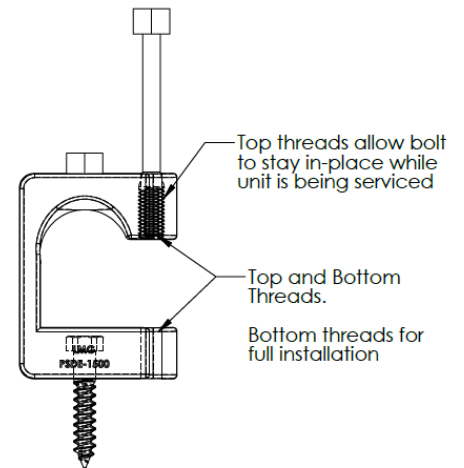
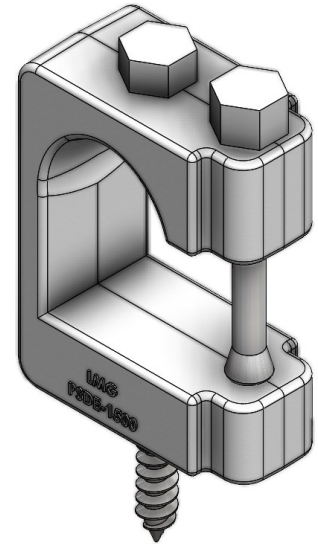
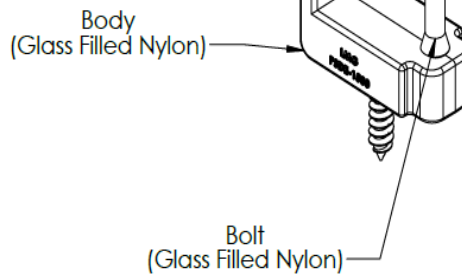
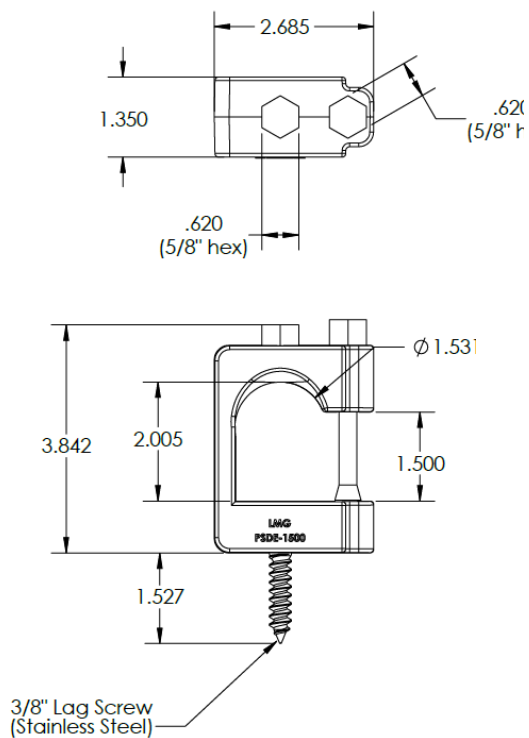
LIBERTY MANUFACTURING GROUP

Made in the U.S.A!



Secondary Loop Deadend (Side Loading)

- Injection molded body and bolt
- Glass filled nylon for high holding strength (2,000lbs+)
- 1-1/2" side opening width
- 3/8" stainless steel lag bolt for installation
- Threaded side-opening bolt. Allows unit to be serviced prior to installation
- 5/8" hex head for installation or removal

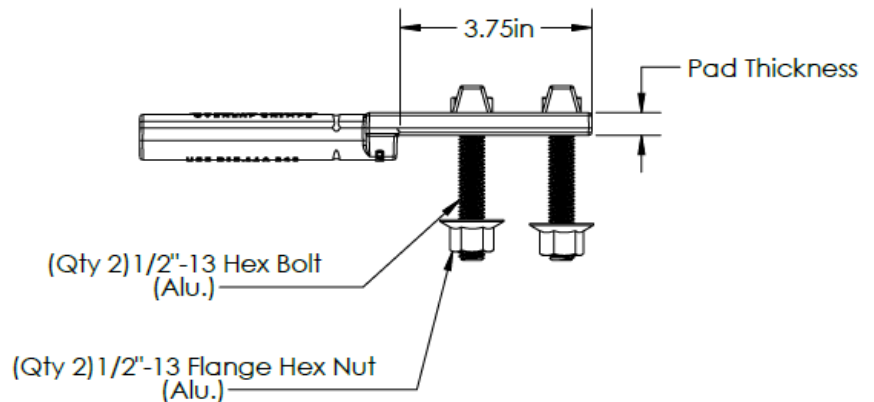
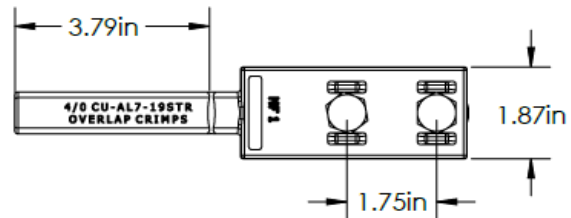
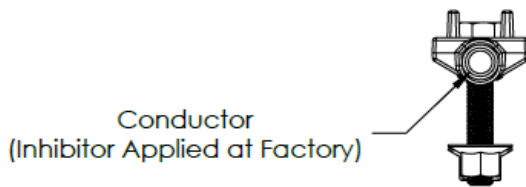
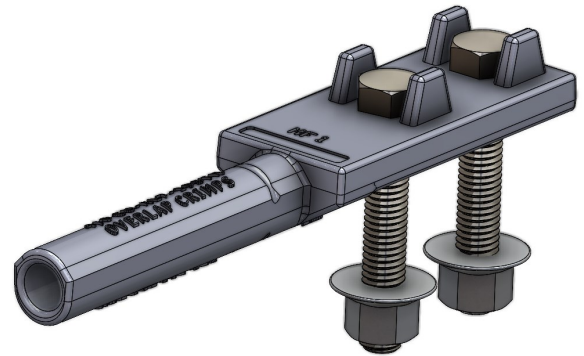


PART #	Max Conductor/Bundle Diameter
PSDE-1500	1-1/2"



Aluminum Compression Ferrules

- Constructed of 99.4% Aluminum.
- NEMA spaced 2 bolt, Captive hardware assembled at factory
- Inhibitor grease applied at factory



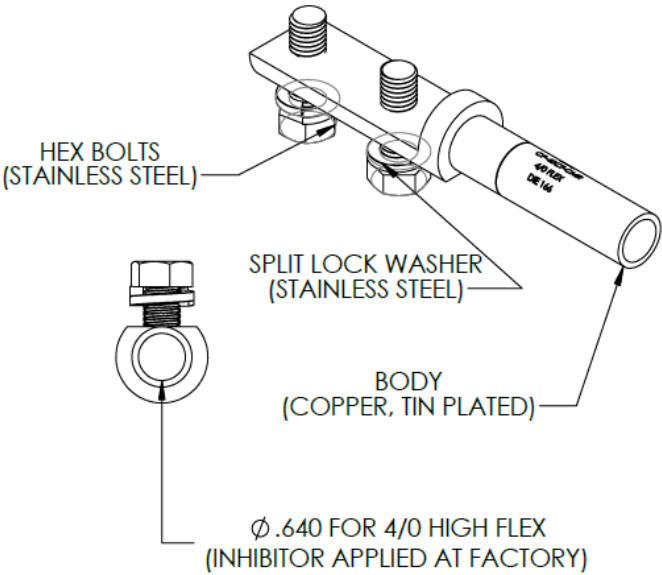
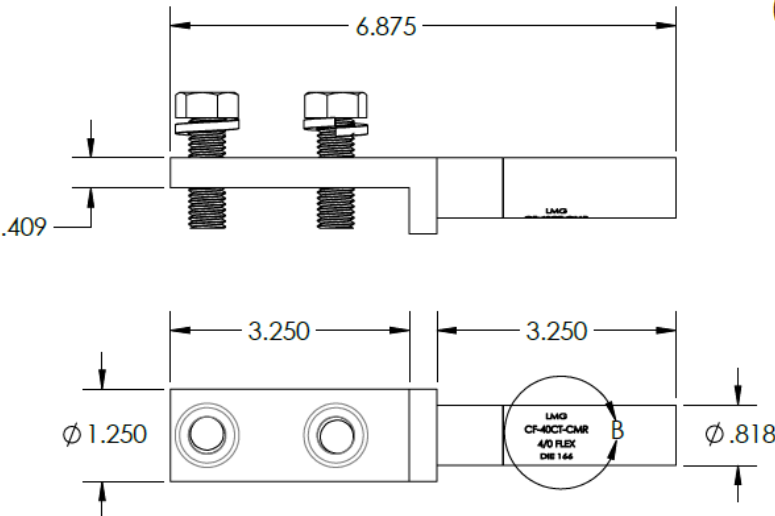
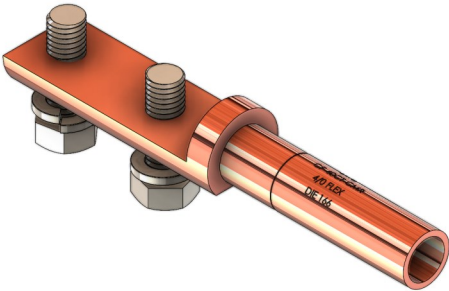
PART #	WIRE SIZE	DIMENSIONS
		Pad Thickness
CPD-40	4/0 FLEX	.460"
CPD-556	556.5 ACSR	.625"

Additional sizes available upon request!



CMR COMPRESSION LUG

- 2-Hole NEMA spaced pad
- Copper (Tin Plated) compression connection for 4/0 High Flex conductor
- Inhibitor Grease applied at factory
- Stainless Steel Hardware



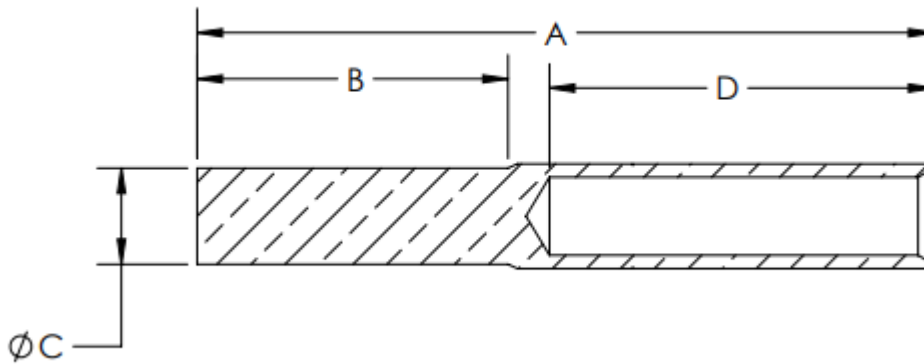
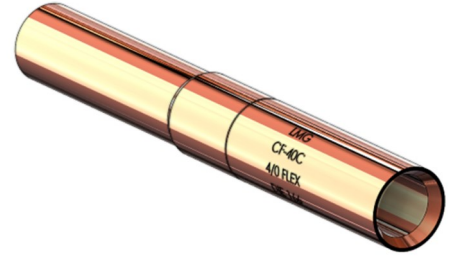
PART #	CONDUCTOR	PAD
CF-40CT-CMR	4/0 CU HIGH FLEX	2-Hole NEMA

Additional Conductor or Pad sizes available upon request!



Copper Compression Ferrules

- Manufactured from solid copper (CDA 101)
- Used with hydraulic crimping tools
- Factory applied grit inhibitor



PART #	WIRE SIZE	DIMENSIONS				CARTON QTY
		A	B	C	D	
CF-40C	4/0 FLEX	5.75"	2.4"	.75"	3"	30
CF-373C	373 FLEX	6.25"	2.5"	.75"	3"	

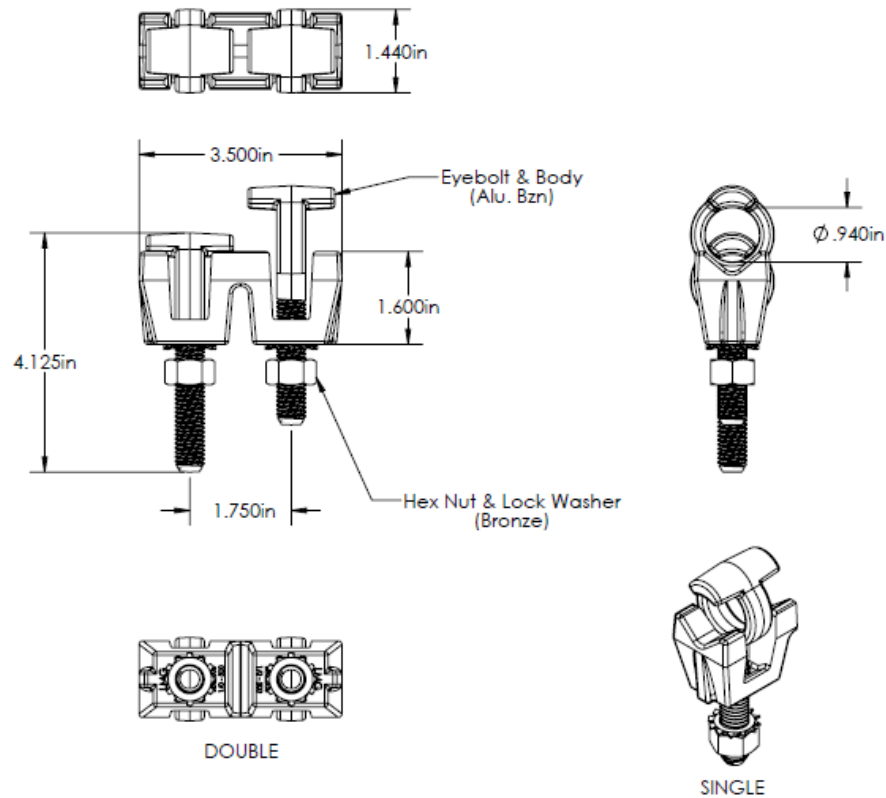
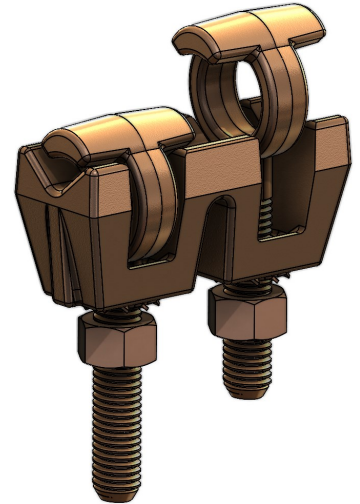
Other sizes available upon request!

ADD "T" AT END OF PART NUMBER FOR TIN PLATING



Bronze Eyebolt Connectors

- Bronze Eyebolt Connectors, Single and Double options
- Used for mounting on 1/4" bus bar
- NEMA spaced mounting on Double version.
- Aluminum-Bronze construction, with silicon bronze hardware.



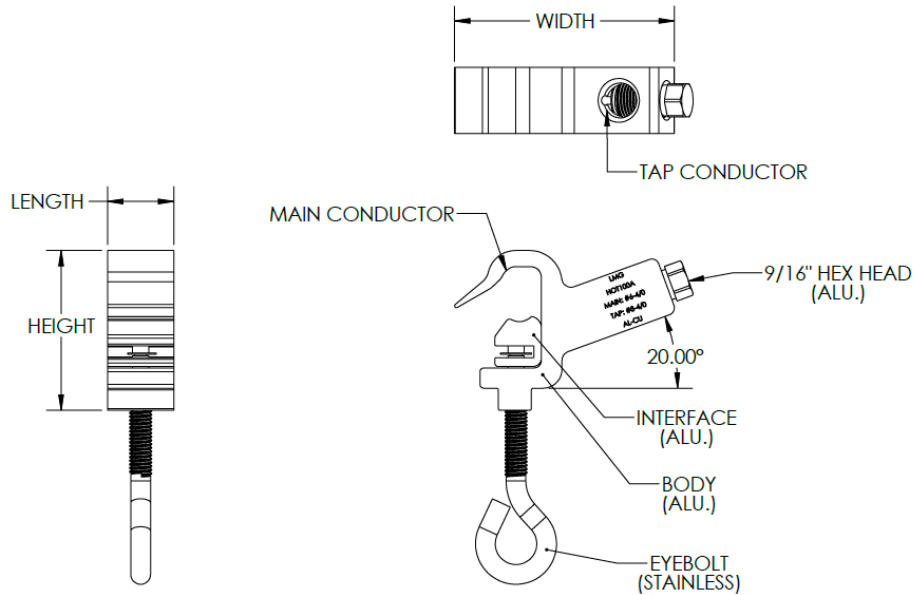
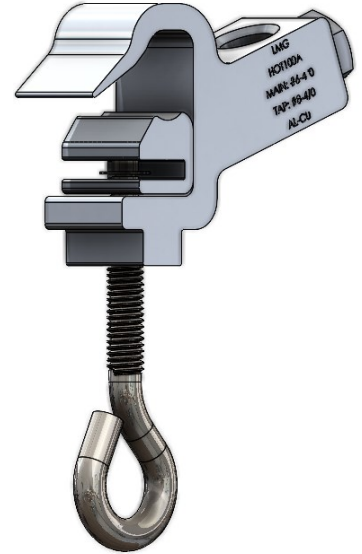
PART #	Description	WIRE SIZE
BEC-500D	Double	1/0 - 500MCM
BEC-500S	Single	1/0 - 500MCM

Additional sizes available upon request!



HOT-LINE Clamp (Angled Series)

- Full-Current rated connector for use as in-line jumper or a device tap
- Increased conductive path and surface contact area between the main and tap line increases current ampacity rating
- Can be installed directly to the main line with no need for bail or stirrup
- Stainless Steel eyebolt increases strength and corrosion resistance
- High-conductivity grit type corrosion inhibitor is factory applied for ease of installation and longevity while connector is in service
- Remains permanently locked through fault current or power surges
- Easy to remove without damaging conductor
- Angled series offers more spacing between the tap conductor and eyebolt

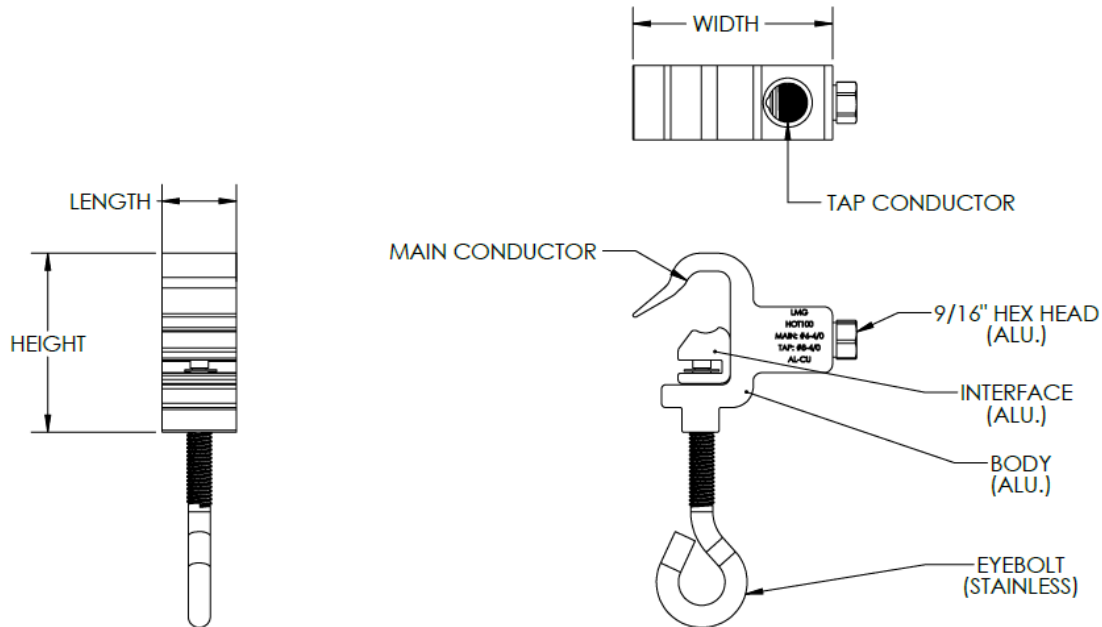
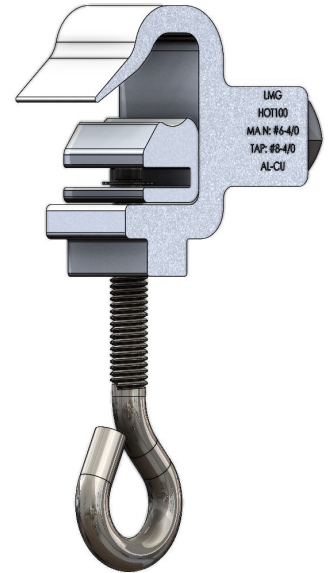


PART #	MAIN		TAP		LENGTH	WIDTH	HEIGHT
HOT100A	#6 - 4/0	.162" - .563"	#8 - 4/0	0.128" - .563"	1.125"	3.7"	2.7"
HOT200A	2/0 - 556 AAC	.414" - .858"	#8 - 4/0	0.128" - .563"	1.5"	4.2"	3.6"
HOT300A	336 - 1272 AAC	.665" - 1.300"	#8 - 4/0	0.128" - .563"	1.75"	5.1"	4.5"



HOT-LINE Clamp (Straight Series)

- Full-Current rated connector for use as in-line jumper or a device tap
- Increased conductive path and surface contact area between the main and tap line increases current ampacity rating
- Can be installed directly to the main line with no need for bail or stirrup
- Stainless Steel eyebolt increases strength and corrosion resistance
- High-conductivity grit type corrosion inhibitor is factory applied for ease of installation and longevity while connector is in service
- Remains permanently locked through fault current or power surges
- Easy to remove without damaging conductor

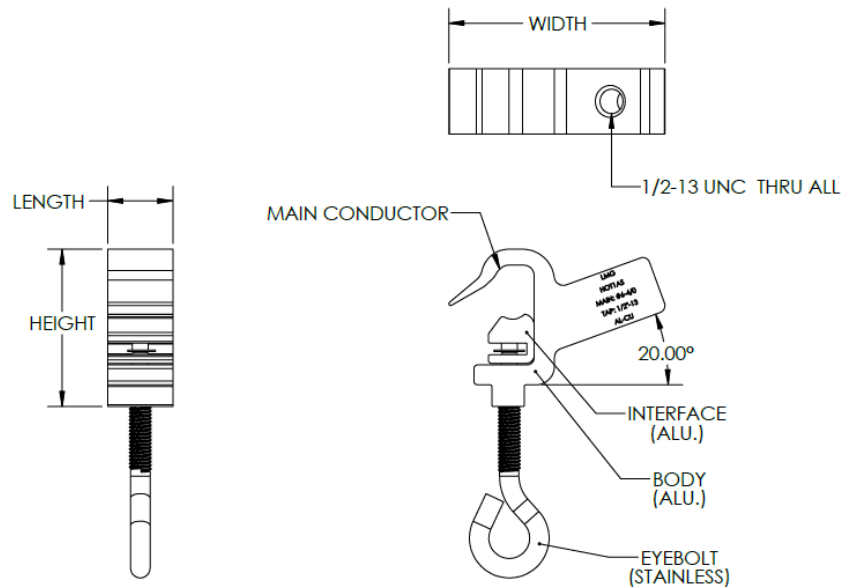
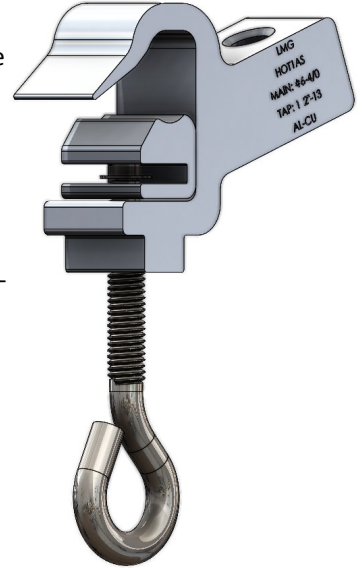


PART #	MAIN		TAP		LENGTH	WIDTH	HEIGHT
HOT100	#6 - 4/0	.162" - .563"	#8 - 4/0	0.128" - .563"	1.125"	3"	2.7"
HOT200	2/0 - 556 AAC	.414" - .858"	#8 - 4/0	0.128" - .563"	1.5"	3.6"	3.6"
HOT300	336 - 1272 AAC	.665" - 1.300"	#8 - 4/0	0.128" - .563"	1.75"	4.8"	4.5"



HOT-LINE Clamp (Angled Stud Series)

- Full-Current rated connector for use as in-line jumper or a device tap
- Increased conductive path and surface contact area between the main and tap line increases current ampacity rating
- Can be installed directly to the main line with no need for bail or stirrup
- Stainless Steel eyebolt increases strength and corrosion resistance
- High-conductivity grit type corrosion inhibitor is factory applied for ease of installation and longevity while connector is in service
- Remains permanently locked through fault current or power surges
- Easy to remove without damaging conductor
- Angled series offers more spacing between the tap conductor and eyebolt
- Angled Stud Series changes the tap location to a 1/2"-13 threaded hole for insulator/arrestor direct mounting

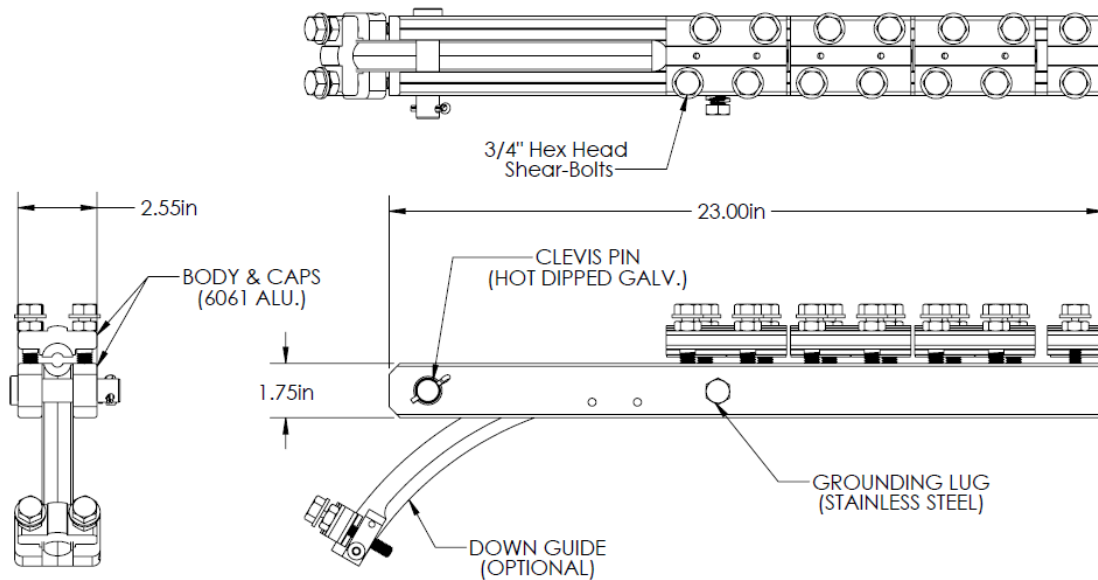
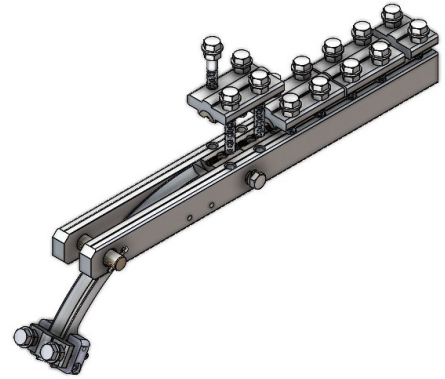


PART #	MAIN		TAP	LENGTH	WIDTH	HEIGHT
HOT1AS	#6 - 4/0	.162" - .563"	1/2"-13	1.125"	3.7"	2.7"
HOT2AS	2/0 - 556 AAC	.414" - .858"	1/2"-13	1.5"	4.2"	3.6"
HOT3AS	336 - 1272 AAC	.665" - 1.300"	1/2"-13	1.75"	5.1"	4.5"



Optical Ground Wire Bolted Deadend

- Designed for full tension termination of Optical Grounding Wire .
- Ultimate mechanical strength—40,000 lbs.
- Rubber grommets suppress Aeolian vibration fatigue at cable exit point
- Shear-head bolts ensure proper torquing strength without damaging the fibers.
- Grounding lug attachment point eliminates need for additional bonding accessories



PART #		CONDUCTOR RANGE	
Without Downguide	With Downguide	MM	IN
OGW-DE-8.9-11	OGW-DG-8.9-11	8.9-11	.350-.433
OGW-DE-11-13	OGW-DG-11-13	11-13	.433-.512
OGW-DE-13-15	OGW-DG-13-15	13-15	.512-.591
OGW-DE-15-17	OGW-DG-15-17	15-17	.591-.669
OGW-DE-17-19	OGW-DG-17-19	17-19	.669-.748



BOLTED NUT CLEVIS
(OPTIONAL)

Add "BN" after DE or DG for optional Bolted Nut Clevis



LIBERTY MANUFACTURING GROUP

Made in the U.S.A!



Lattice Tower Sign Clamp

- Designed to hold a variety of signage from various positions
- Accommodates a wide range of structure thicknesses
- Constructed of 6061-T6 Aluminum with Stainless Steel Bolts
- Easy to install
- Sign not included

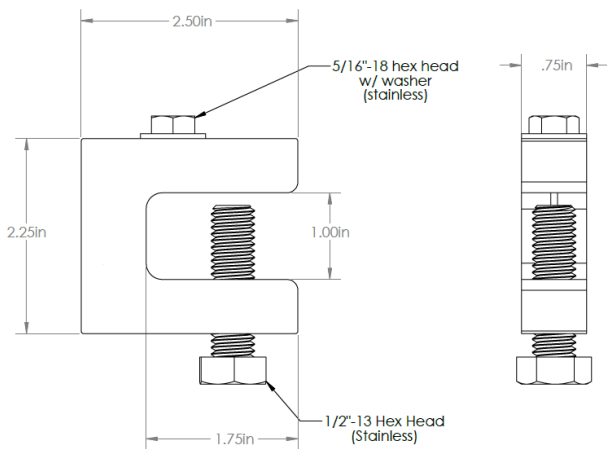


FIGURE 1

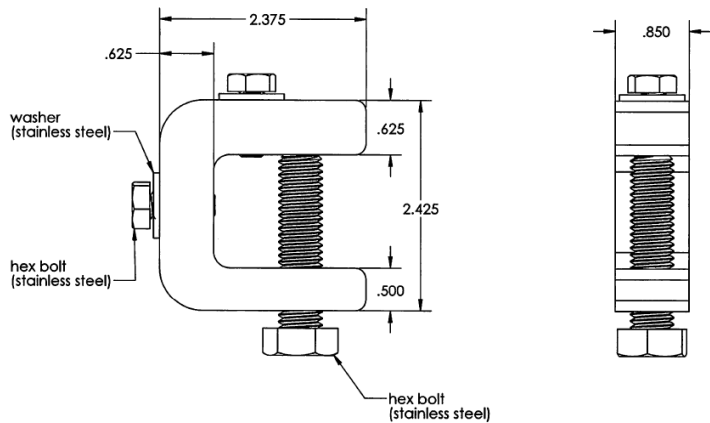


FIGURE 2

PART #	FIGURE	MAX Opening	Sign Locations	Dimensions			BOX QTY
				A	B	C	
LTSC-300	1	1.00"	1	2.500"	2.250"	.750"	25
LTSC-305	2	1.30"	2	2.375"	2.425"	.850"	25

Add Suffix "S" for galvanized steel clamp

Other sizes available upon request!



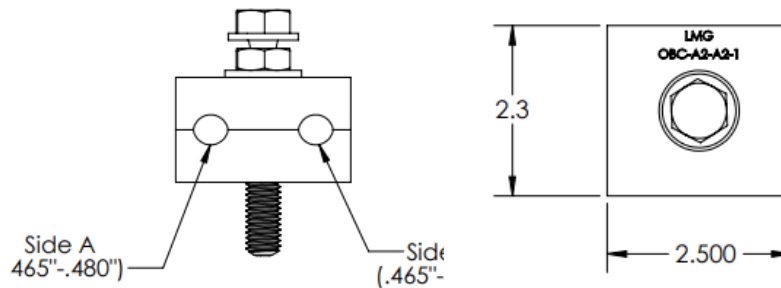
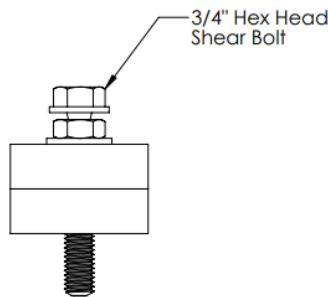
LIBERTY MANUFACTURING GROUP

Made in the U.S.A!



Bonding Clamps for OPGW

- Designed for use as a permanent or temporary connection in tower grounding applications.
- Aluminum parallel groove clamp with shear head bolt that will break off, giving the installer a positive indication of a correctly installed connection, without damaging the conductor.
- Available in a variety of ranges and with one or two bolts depending on application
- Exclusive high-conductivity grit type corrosion inhibitor is factory applied.



PART # ORDERING FORMAT:

OBC	-	XX	YY	-	#
OPGW BONDING CLAMP		SIDE A	SIDE B		NUMBER OF BOLTS
		RUN GROOVE CODE	TAP GROOVE CODE		1 = One Bolt Design 2 = Two Bolt Design

EXAMPLE: OBC-A2A2-1

GROOVE CODE	GROOVE RANGE (INCHES)
A1	.112" - .126"
B1	.127" - .141"
C1	.142" - .156"
D1	.157" - .171"
E1	.172" - .186"
F1	.187" - .201"
G1	.202" - .216"
H1	.217" - .231"
J1	.232" - .246"
K1	.247" - .261"
L1	.262" - .276"
M1	.277" - .291"

GROOVE CODE	GROOVE RANGE (INCHES)
N1	.292" - .306"
P1	.307" - .321"
Q1	.322" - .336"
R1	.337" - .351"
S1	.352" - .366"
T1	.367" - .381"
U1	.382" - .396"
V1	.397" - .411"
W1	.412" - .424"
X1	.425" - .440"
Y1	.441" - .454"
Z1	.455" - .464"

GROOVE CODE	GROOVE RANGE (INCHES)
A2	.465" - .480"
B2	.481" - .495"
C2	.496" - .510"
D2	.511" - .525"
E2	.526" - .540"
F2	.541" - .555"
G2	.556" - .570"
H2	.571" - .585"
J2	.586" - .600"
K2	.601" - .615"
L2	.616" - .630"
M2	.631" - .645"
N2	.646" - .660"

GROOVE CODE	GROOVE RANGE (INCHES)
P2	.661" - .675"
Q2	.676" - .690"
R2	.691" - .705"
S2	.706" - .720"
T2	.721" - .735"
U2	.736" - .750"
V2	.751" - .765"
W2	.766" - .780"
X2	.781" - .795"
Y2	.796" - .810"
Z2	.811" - .825"
A3	.826" - .840"
B3	.841" - .855"

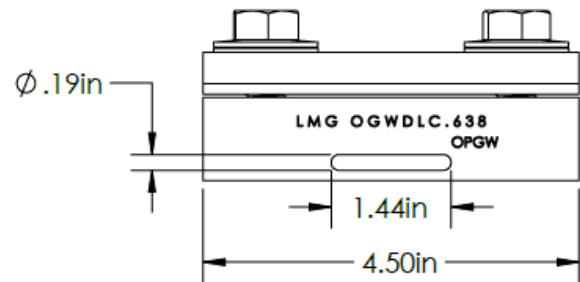
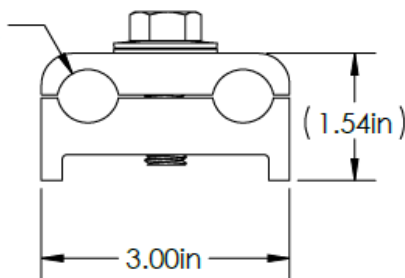


Optical Ground Wire Downlead Clamp

- Designed to connect OPGW to the pole or structure as it is routed down to the splice box.
- Grounding lug can be attached to either bolt point and adds an additional layer of safety by grounding out any voltage that may be picked up through the OPGW as it travels through the phases.
- Through hole accepts a 5/8" bolt for direct attachment to wood or steel poles.
- Side slots accept a band up to 1 1/2".
- Constructed of 6061-T6 Aluminum for optimal conductivity.
- Stainless Steel hardware for corrosion resistance.



Conductor Port
Pre-filled w/ Inhibitor



PART #	OPGW DIAMETER		CARTON QTY
	SIDE A	SIDE B	
OGWDLC .504	.504"	.504"	10
OGWDLC .551	.551"	.551"	
OGWDLC .638	.638"	.638"	
OGWDLC .676	.676"	.676"	
OGWDLC .709	.709"	.709"	
OGWDLC .711	.711"	.711"	

Please consult factory for OPGW Sizes not listed here

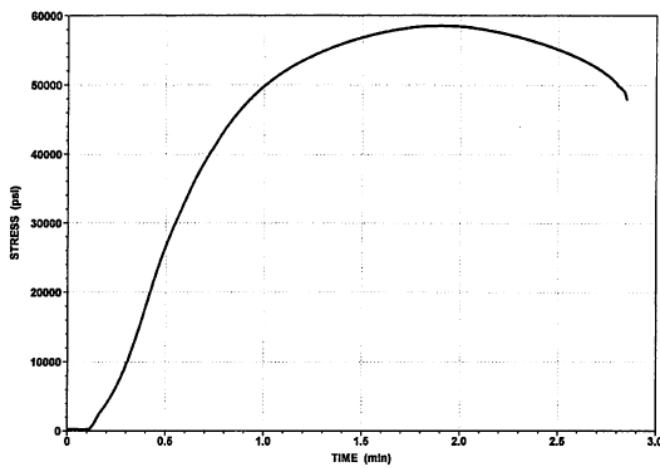
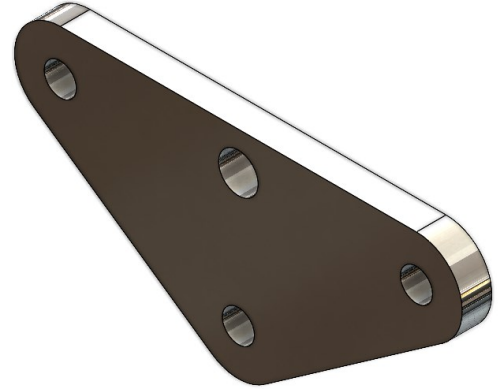
Note: Side A and B can be different

Example: OGWDLC .638-.711 is manufactured for two different OPGW wire sizes.



Yoke Plates

- Custom yoke plates
- Machined from A36 Steel, 3/4" Thick Plate
- 30,000 Lbs Ultimate Strength
- Hot Dip Galvanized

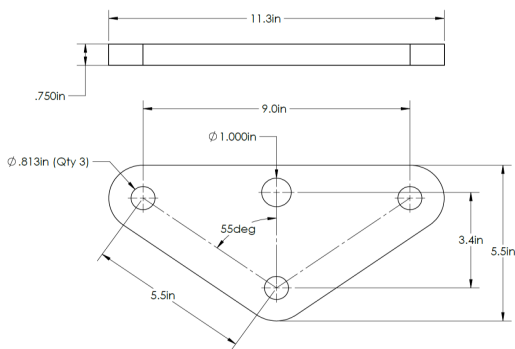


Date: 06/02/24

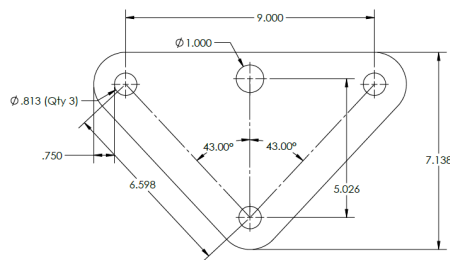
Time: 16:15:44

Peak Load
Peak Stress

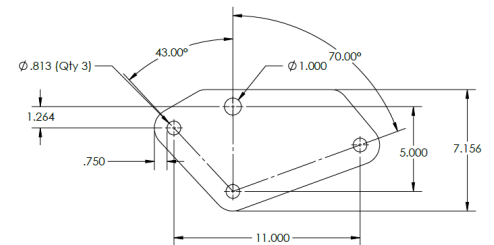
58528 LB
58528 psi



Part Number: YP5559



Part Number: YP75439



Part Number: YP75437011

Other sizes available upon request!

LIBERTY MANUFACTURING GROUP

Made in the U.S.A!



Current Transformers (CT's)

(Revenue Metering Applications)



- Window-type design for use with Revenue/Billing metering applications.
- Suitable for both indoor and outdoor service.
- Adheres to IEEE C57.13
- The toroidal cores are constructed from grain oriented silicon steel and evenly wound with copper wire.
- Each unit individually tested prior to encapsulating in a mold that is made from UL listed, strong, weather-proof black plastic housing
- Certified test reports provided with every unit.
- Each unit is serialized for traceability
- Additional Tin-plated copper busbar available

P/N: CT-2000-5-600V-MP1	
Current Ratio (PRI:SEC AMPS)	2000:5
Freq.	60Hz
Voltage	600V
Rating Factor	2.0 @30°C
High Accuracy Class Rating	0.15 B-0.2
Window Opening	5.5"
Mounting Brackets	Includes (4) L bracket mounts
Burden	0.9@5.00VA
BIL	10 KV

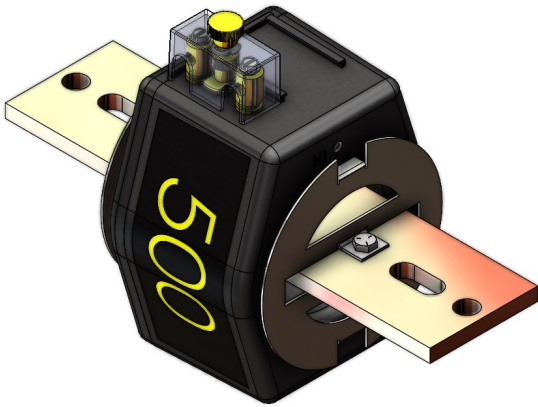


Current Transformers (CT's)

(Revenue Metering Applications)



- Window-type design for use with Revenue/Billing metering applications.
- Suitable for both indoor and outdoor service.
- Adheres to IEEE C57.13
- The toroidal cores are constructed from grain oriented silicon steel and evenly wound with copper wire.
- Each unit individually tested prior to encapsulating in a mold that is made from UL listed, strong, weather-proof black plastic housing.
- Certified test reports provided with every unit.
- Each unit is serialized for traceability
- Tin-plated copper busbar is included for mounting



CUSTOM BUS BARS AVAILABLE UPON REQUEST

P/N: CT-500-5-600V (CT only)

P/N: CTWB-500-5-600V

(Includes Bus Bar & Clips)

Current Ratio (PRI:SEC AMPS)	500:5
Voltage	600V
Rating Factor	4.0
High Accuracy Class Rating	0.15
Window Opening	3"
Base Plate Included	No
Burden	0.9@5.00VA
BIL	10 KV
Approximate Weight	8.7 lbs.

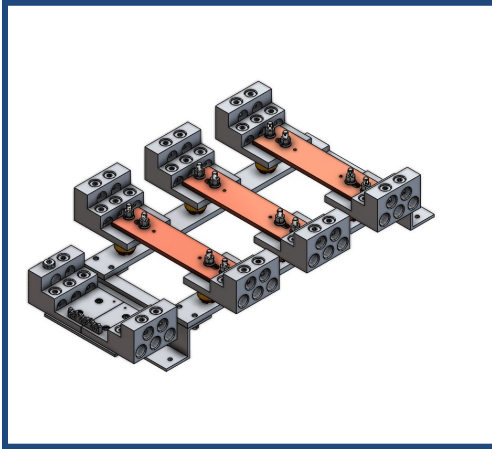
LIBERTY MANUFACTURING GROUP

Made in the U.S.A!



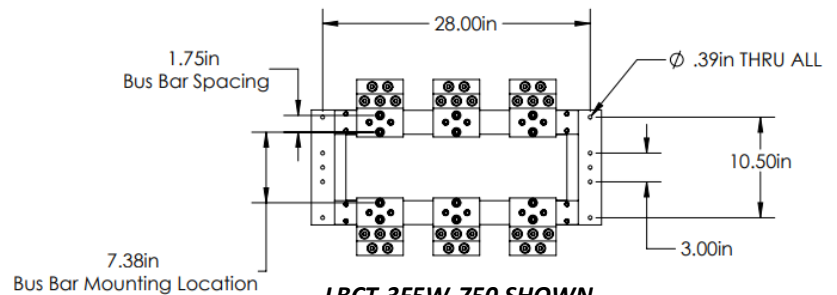
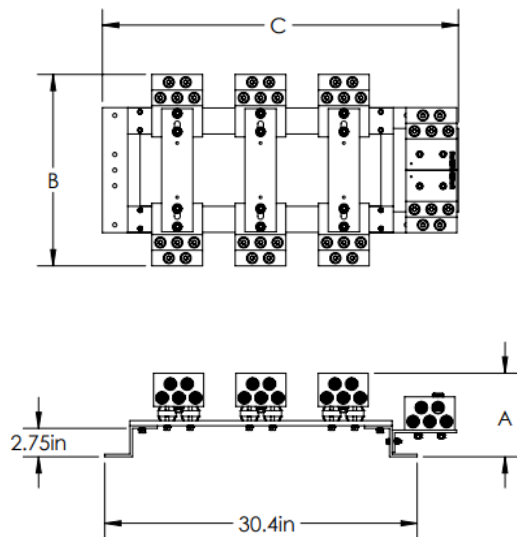
LIBERTY MANUFACTURING GROUP

Made in the U.S.A!



Current Transformer Mounting Assembly

- 1/2" studs on 1-3/4" NEMA spacing, on centerline
- Aluminum Set Screw style connectors with 5/16" internal hex heads
- 1-Phase to 3-Phase configurations
- 3-wire to 5-wire configurations
- All aluminum platform to reduce weight and mitigate corrosion
- Utilizes UL-746 tested insulating material



Bus Bars not included

PART #	CONDUCTOR RANGE				DIMENSIONS		
	MIN		MAX		A	B	C
LBCT-3F3W-500	1/0 CU	.368" DIAM	500 MCM	.814" DIAM	6.8"	15.4"	34.2"
LBCT-3F5W-500			500 MCM		8.1"	18.4"	
LBCT-3F3W-750			750 MCM	.998" DIAM	6.8"	15.4"	
LBCT-3F5W-750			750 MCM		8.1"	18.4"	

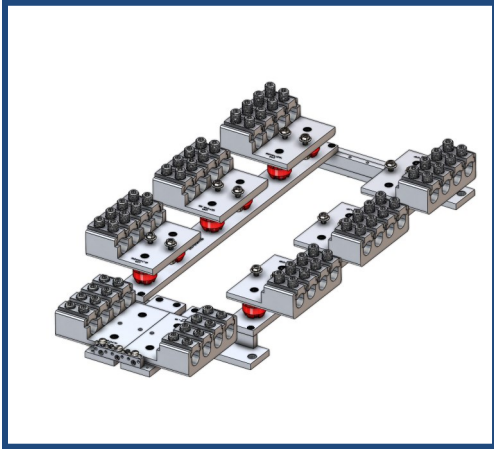
ADD "T" AT END OF PART NUMBER FOR TIN PLATING

Other sizes and bus bar spacing available upon request!



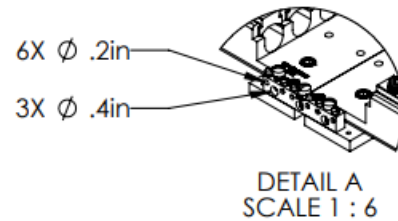
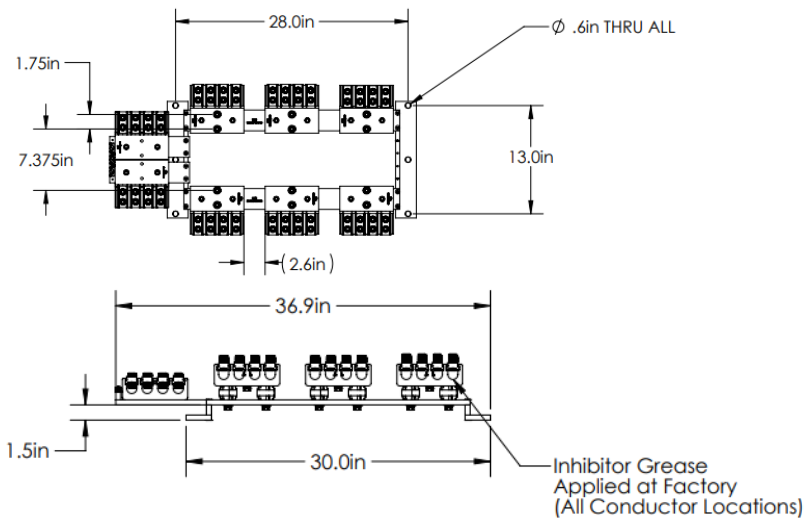
LIBERTY MANUFACTURING GROUP

Made in the USA!



Current Transformer Mounting Assembly

- 1/2" studs on 1-3/4" NEMA spacing, on centerline
- Aluminum Set Screw style connectors with 5/16" internal hex heads
- 1-Phase to 3-Phase configurations
- 4-wire Lay-In Style Configuration
- All aluminum platform to reduce weight and mitigate corrosion
- Utilizes UL-746 tested insulating material



PART #	# Phases	# Wires	CONDUCTOR RANGE			
			MIN		MAX	
LBCT-3F4W-750	3	4	#6 Cu	.162" Diam	750 MCM	.998" DIAM

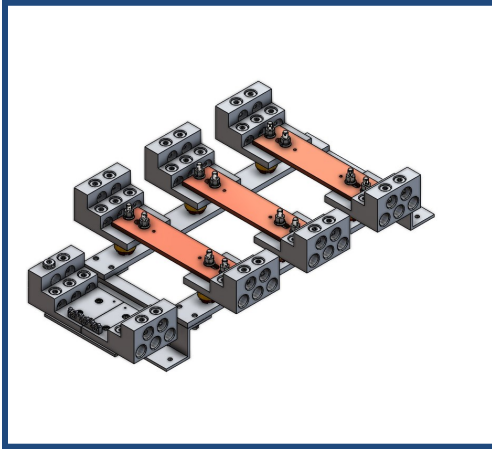
ADD "T" AT END OF PART NUMBER FOR TIN PLATING

Other sizes and bus bar spacing available upon request!



LIBERTY MANUFACTURING GROUP

Made in the U.S.A!



Current Transformer Mounting Assembly

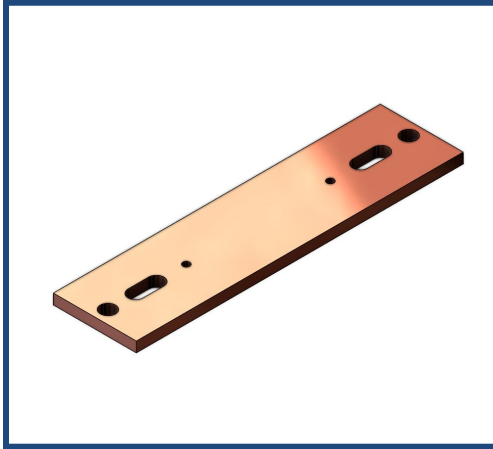
- Insulator material and testing data sheet

Material Properties (BMC)	Test Method	Values	PLC	Units
Specific Gravity	ASTM D-792	1.9		--
Glass Contents	--	20		%
Water Absorption (24 hours)	ASTM D-570	0.15		%
Tensile Strength	ASTM D-638	400		Kgf/cm ²
Flexural Strength	ASTM D-790	900		Kgf/cm ²
Izod Impact Strength	ASTM D-256	250		J/m
Compressive Strength	ASTM D-695	1,500		Kgf/cm ²
Dielectric Strength	ASTM D-149	10		kV/mm
Comparative Tracking Index	IEC-60112	> 600	0	V
Track Resistance	ASTM D-2303	> 600		Minutes
Dry Arc Resistance	ASTM D-495	> 180		Seconds
Flammability Index	UL 94	V-0		--
Glow Wire Ignition Temp (Thickness > 3mm)	IEC-60695-2-13	960		°C
Hot Wire Ignition Test	ASTM D-3874	> 120	0	Seconds
Relative Temperature Index, Mechanical Strength (Thickness - 3mm)	UL - 746B	130		°C
Relative Temperature Index Electrical Strength (Thickness - 3mm)	UL - 746B	105		°C
Hight Voltage Arc Tracking Rate	UL - 746A	< 10	0	mm/min
High Current Arc Ignition	UL - 746A	> 120	0	mean # of arcs
Material Group	IEC - 60601	1		--
Pollution Degree	IEC - 60950	3		--
Insulation Class	as per NEMA	B		--
Working Temp	--	-40 - 135		°C



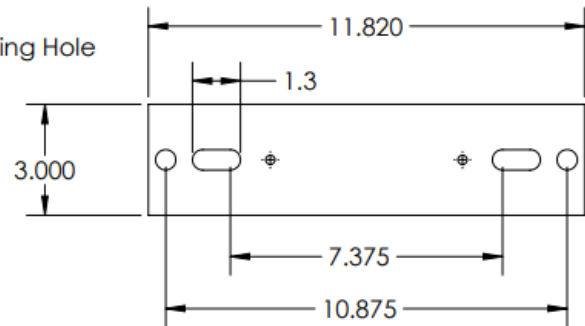
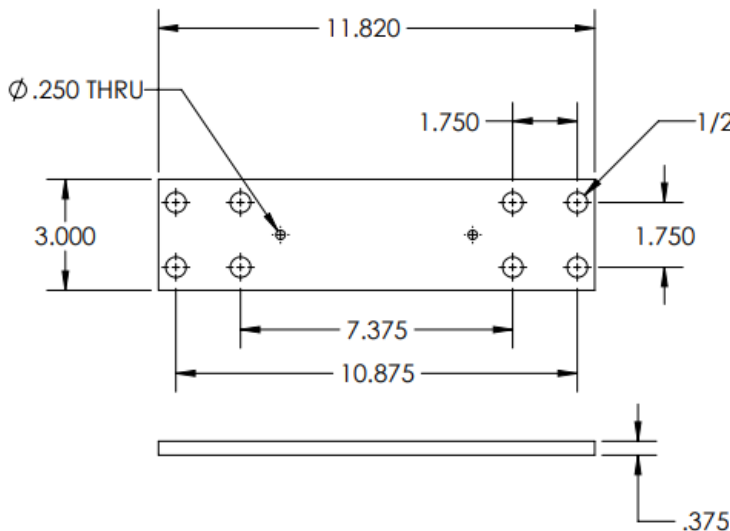
LIBERTY MANUFACTURING GROUP

Made in the USA!



Current Transformer Bus Bar

- 1/2" Mounting Holes on 1-3/4" NEMA spacing
- Copper bar, Tin Plated



BB-2NS-11 SHOWN

PART #	DESCRIPTION	THRU HOLE BOLT SIZE	MATERIAL	THICKNESS
BB-2NS-11	2 HOLE NEMA SPACE WITH SLOT	1/2"	CU	3/8"
BB-4N-11	4 HOLE NEMA SPACING			

ADD "-NT" AT END OF PART NUMBER FOR **NO** TIN PLATING

Other sizes available upon request!