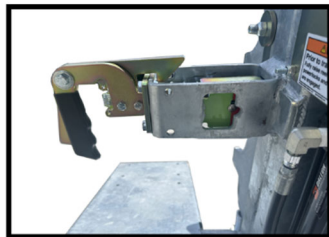
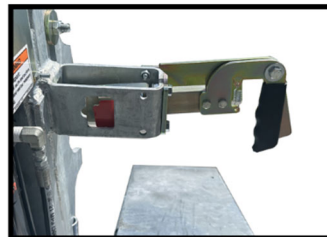




GR POWERLOCK II™ SELF-LOADING REEL TRAILER SPECS



Green Indicator = Positive Engagement



Red Indicator = No Engagement

EXCLUSIVE STANDARD ADDED VALUE:

- POWERLOCK II™ Technology Provides Industry Leading Safety, Ease of Use, Low Maintenance, and Durability.
- SAFETY and Peace of Mind
- No Pins, Cotters, or Lanyards that Secure the Reel Arbor (which is the most critical safety point)
- Faster Reel Loading, Unloading, and Deployment Reduce Labor Costs and Fatigue on Workers.

BUILT FOR SAFETY. BUILT FOR SPEED. BUILT TO LAST.

CAPACITIES

- GR8: 11,050 lbs. GVWR @ 15% Tongue Weight
- GR10: 13,800 lbs. GVWR @ 15% Tongue Weight

AXLES

- GR8: 10K lbs. Axle
- GR10: 12K lbs. Axle

WHEELS

- GR8: (2) 17.5 x 6.75 HC / 8 on 6.5 BC w/ 0.19 Inset
- GR10: (2) 17.5 x 6.75 HC / 8 on 6.5 BC w/ 0.19 Inset

TIRES

- GR8: (2) 215/75R17.5 LR-H Tires
- GR10: (2) 235/75R17.5 LR-J Tires

BRAKES

- GR8: 12.25" x 3.38" Electric w/ Safety Breakaway Kit
- GR10: 12.25" x 5.00" Electric w/ Safety Breakaway Kit

PAYLOAD: ALL FINAL PAYLOADS BASED ON CHOSEN MODEL AND OPTIONS

REEL WEIGHT (PAYLOAD)

- GR8: 8,500 lbs. Approx.
- GR10: 10,000 lbs. Approx.

REEL DIAMETER: 125" Maximum

REEL OPENING

- GR8: 64" Approx.
- GR10: 60.50" Approx.

REEL SHAFT DIAMETER: 2.50" Solid w/ Centering Collars

OVERALL LENGTH:

- GR8: 141.75" Approx.
- GR10: 141.75" Approx.

OVERALL WIDTH: 102" Overall Width

OVERALL WEIGHT:

- GR8: 2,200 lbs. Approx.
- GR10: 2,300 lbs. Approx.

Actual Trailer Weight will Vary with Options & Finishes Chosen.

STANDARD FEATURES

- POWERLOCK II™ Technology Provides Industry Leading Safety, Ease of Use, Low Maintenance, and Durability.
- Auto-locking Swing Out Reel Bar Retainer w/ Secondary Cylinder Lock
- Oil Bath Hubs (Greaseable Option All)
- Electric Brakes

STANDARD TRAILER BODY

- Heavy Duty 6" X 4" X ¼" Frame
- 6-Position Adjustable Hitch
- ¾" X 36" GR70 Yellow Zinc Safety Chains with Hooks
- 8,000 lbs. Static Front Jack

WIRING

- DOT / ICC Approved LED Lights and Conspicuity Reflective Tape
- FMVSS / CMVSS Standard 108 LED Lighting
- Sealed Beam, Rubber Mounted Stop, Turn, Tail and Marker Lights
- 100% Sealed Heat-Shrunked Wiring Connections w/ Full Loom
- Breakaway Kit with Absorbed Glass Mat (AGM) Battery

PAINT

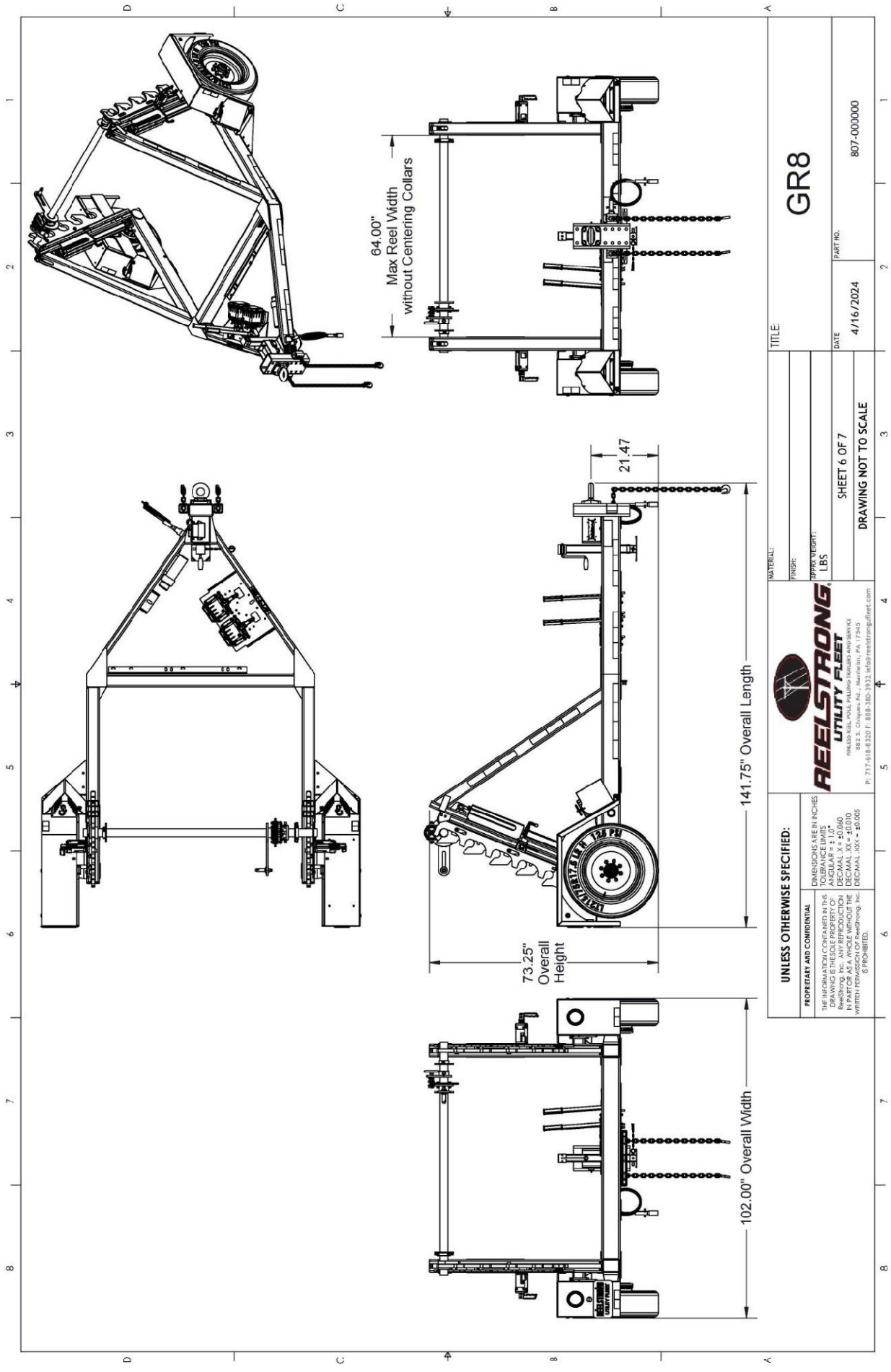
- Biodegradable Pretreat Acid Cleaning (Superior to re-used sandblasting material that can impregnate metals with oil)
- Seams Caulked
- Rust Preventative 2-Part Epoxy Primer
- Standard Colors: Red, Black, White and CAT Yellow

OPTIONS

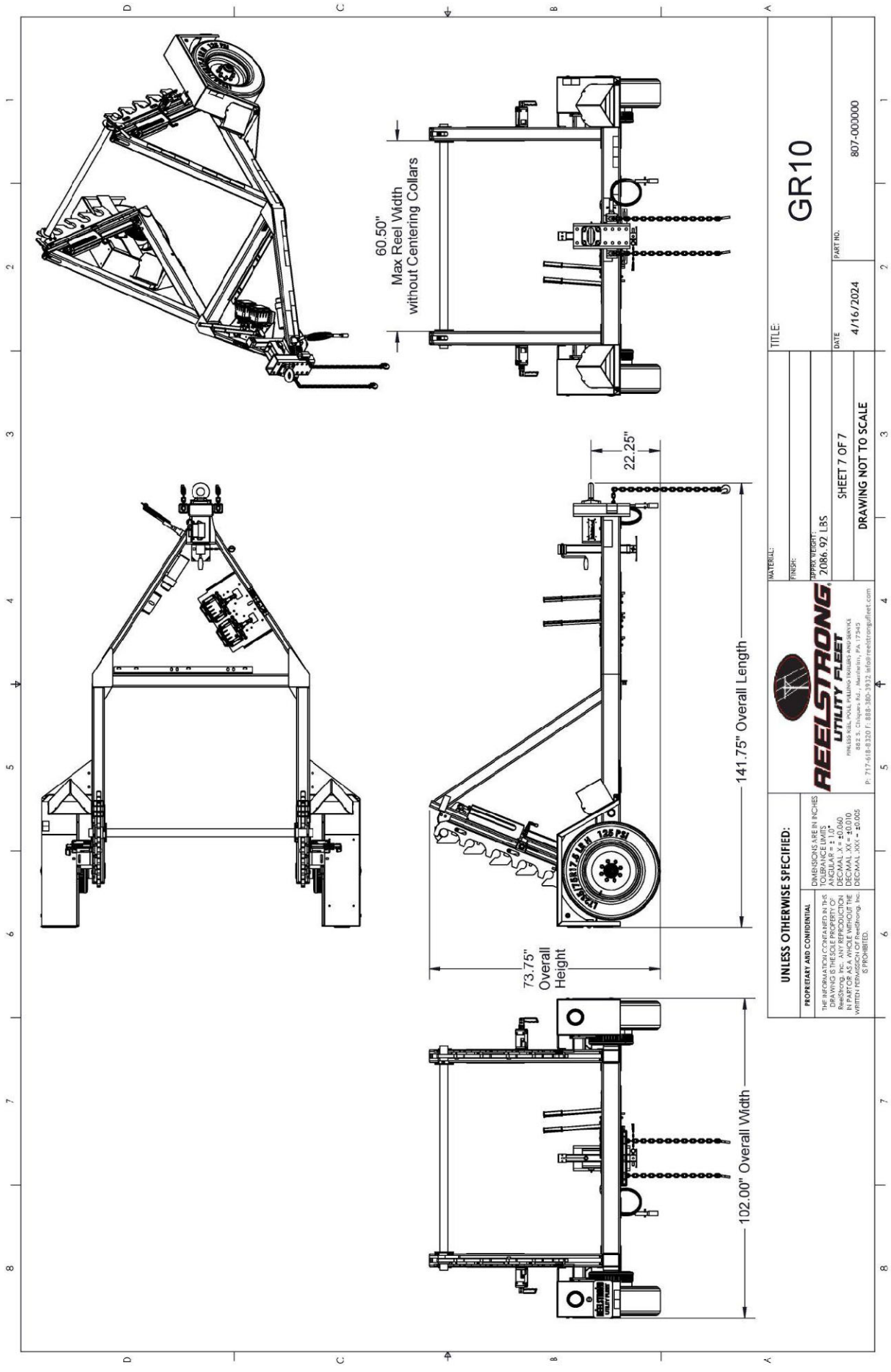
- 10-Year Galvanized Structural Warranty (2-Year Painted)
- 13 HP HONDA Engine Hydraulic Power Pack Comes STANDARD w/ ENGINE COVER, 15 Gallon Reservoir, Replaceable Oil Filter, Pressure Gauge and Solar Fade Resistant Plastic Control Placard. (Electric Start Optional)
- Rim Drive Take-up Retriever
- 16" Long 6-Bolt Hitch Extension (w/ 52" Safety Chains and Breakaway Cable Extension)
- 3" Lunette Eye
- Rotating Arbor Ground
- Wiring Connections Soldered and Sealed w/ Heat Shrink Tubing
- Plug-and-Play Sealco Wiring Harness
- Wheel Chocks: Rubber or All Weather Galvanized Grip Strut
- Spare Tire and Mount
- Solar Charged Breakaway Kit
- All Stainless Steel Fasteners (½" and under)
- 13 HP Honda Engine Hydraulic Power Unit
- Engine Cover

OPTIONS (cont.)

- 9" Bronze Overspin Brake
- Truck-Lite Lighting
- Lug Nut Indicators



UNLESS OTHERWISE SPECIFIED:		DIMENSIONS ARE IN INCHES	
TOLERANCES:		TOLERANCES:	
FINISH:		TOLERANCES:	
MATERIAL:		TOLERANCES:	
PROPERTY AND CONFIDENTIAL		TOLERANCES:	
THE INFORMATION CONTAINED IN THIS		TOLERANCES:	
DRAWING IS THE SOLE PROPERTY OF		TOLERANCES:	
REELSTRONG UTILITY FLEET		TOLERANCES:	
IN PART OR AS A WHOLE WITHOUT THE		TOLERANCES:	
WRITTEN PERMISSION OF Reelstrong, Inc.		TOLERANCES:	
IS PROHIBITED.		TOLERANCES:	
882 S. Clarks Rd., Mantoloking, PA 17343		TOLERANCES:	
P: 717-618-8320 F: 888-380-3932 info@reelstrongfleet.com		TOLERANCES:	
TITLE: GR8		SHEET 6 OF 7	
DATE: 4/16/2024		DRAWING NOT TO SCALE	
PART NO.		807-000000	
APPROX WEIGHT: LBS			



UNLESS OTHERWISE SPECIFIED:		<div> REELSTRONG UTILITY FLEET PHILADELPHIA, PA. 19104 882 S. CLINTON RD., MANTUA, PA. 17545 P: 717-618-8300 F: 888-380-3302 info@reelstronginc.com</div>		TITLE: GR10	
PROPERTY AND CONFIDENTIAL		DIMENSIONS ARE IN INCHES TOLERANCE LIMITS FRACTIONS ± .015 DECIMAL ± .010 IN PART OR AS A WHOLE WITHOUT THE WRITTEN PERMISSION OF Reelstrong, Inc. IS PROHIBITED.		DATE 4/16/2024	
THE INFORMATION CONTAINED IN THIS DRAWING IS THE SOLE PROPERTY OF REELSTRONG, INC. AND IS NOT TO BE REPRODUCED OR TRANSMITTED IN ANY FORM OR BY ANY MEANS, ELECTRONIC OR MECHANICAL, INCLUDING PHOTOCOPYING, RECORDING, OR BY ANY INFORMATION SYSTEMS WITHOUT THE WRITTEN PERMISSION OF Reelstrong, Inc.		SHEET 7 OF 7		PART NO. 807-000000	
MATERIAL:		APPROX WEIGHT:		DRAWING NOT TO SCALE	
FINISH:		2086.92 LBS			